

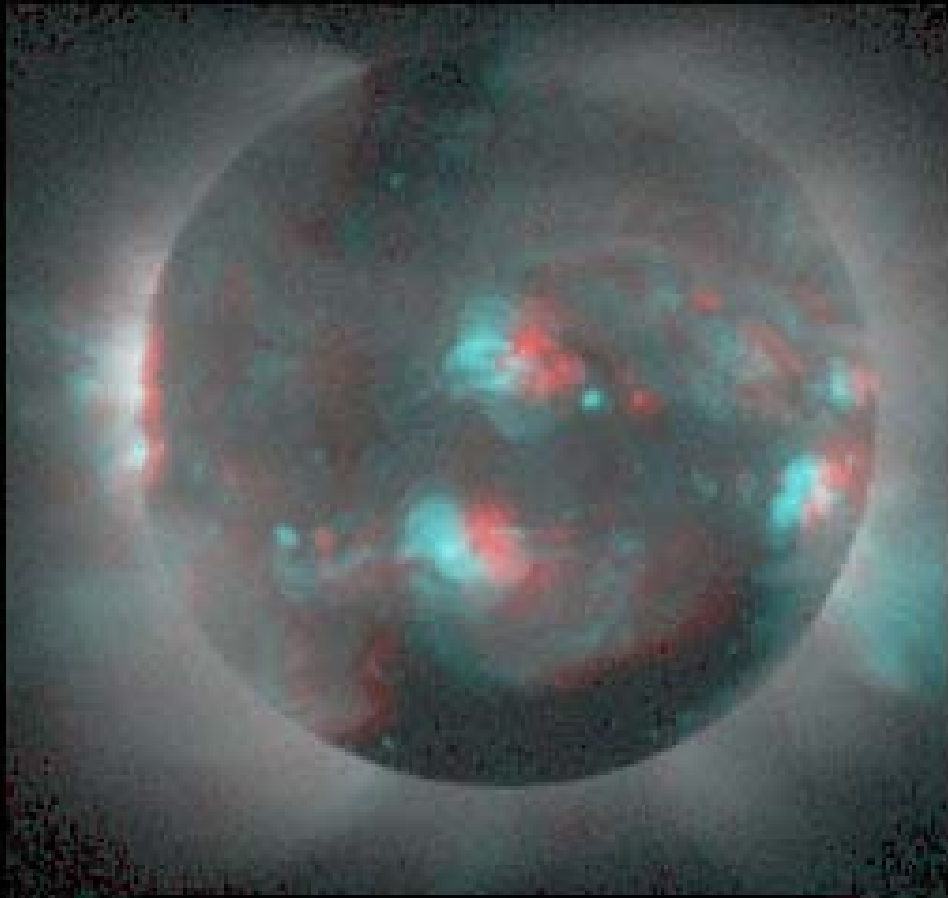
Solar System in 3D

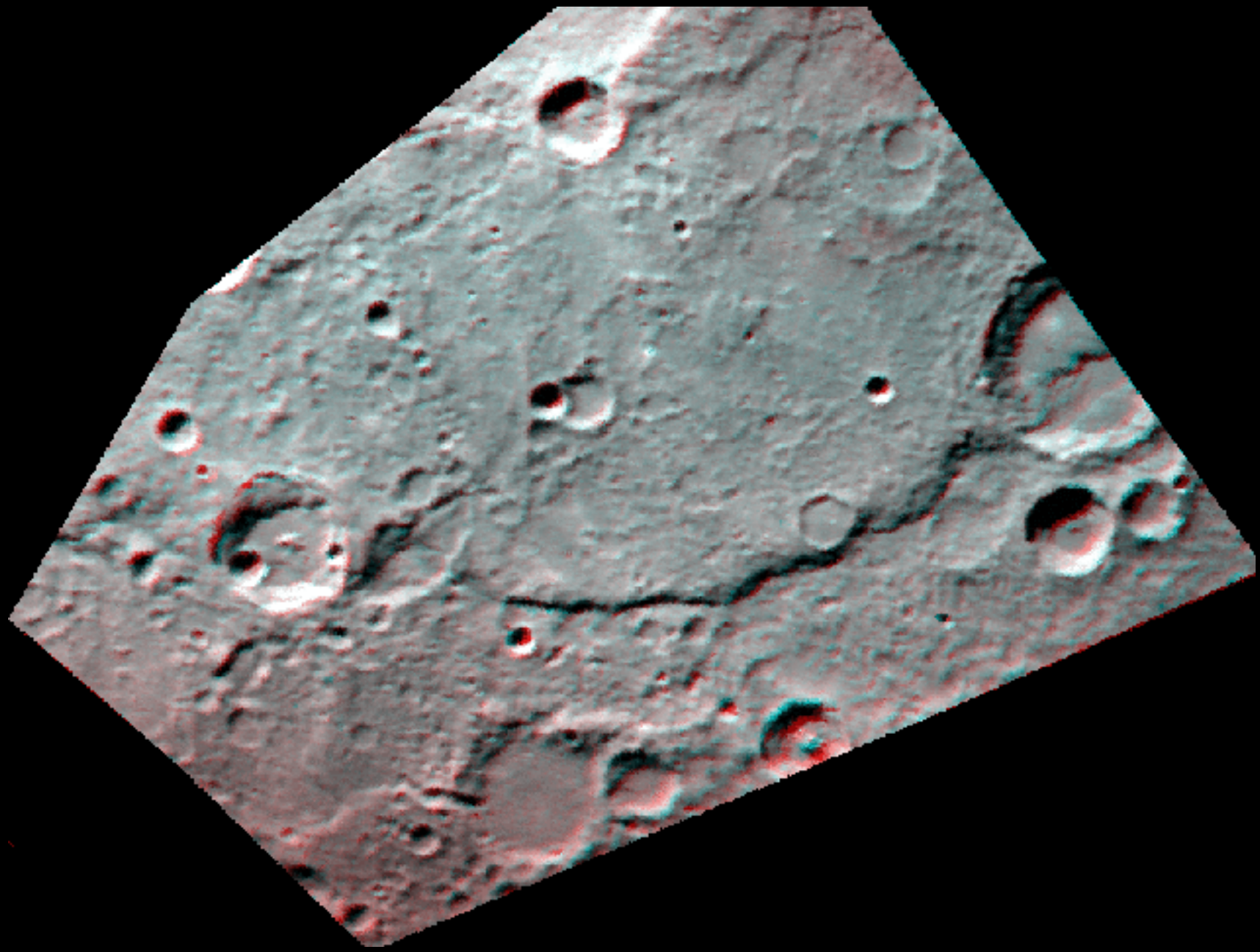
LPI Imagery

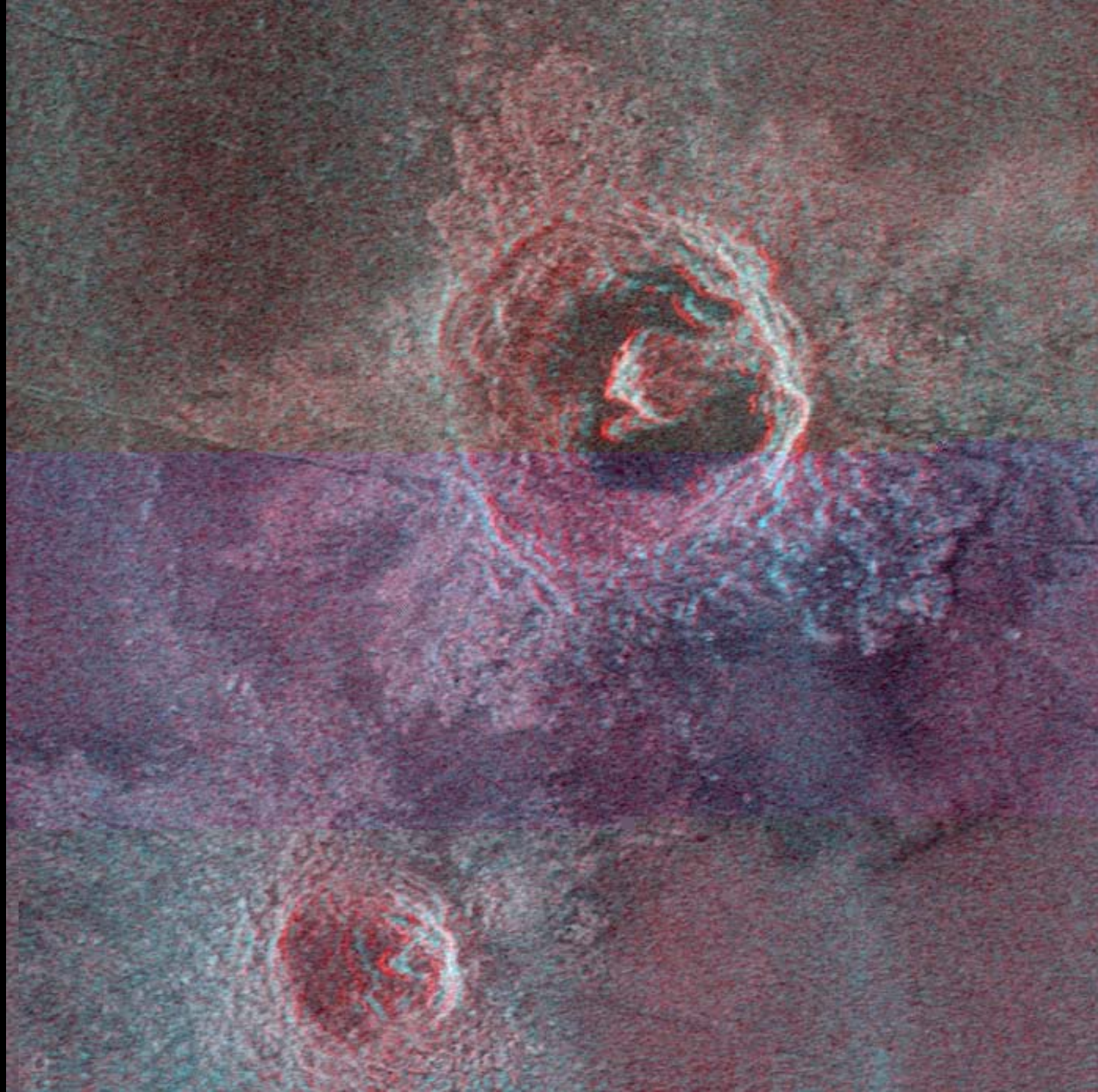
http://www.lpi.usra.edu/publications/slidesets/3dsolarsystem/3d_index.shtml

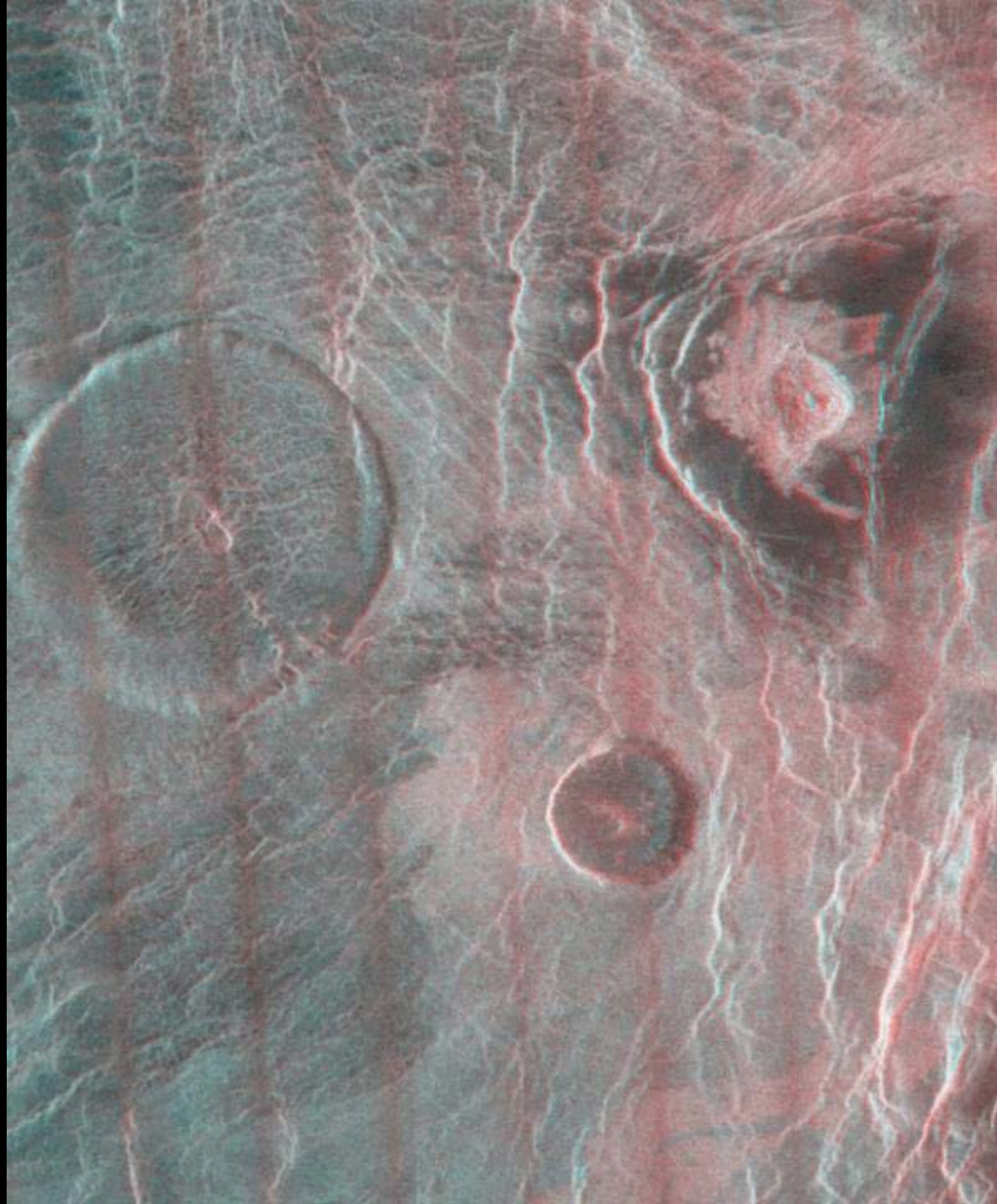
Sample Tour:

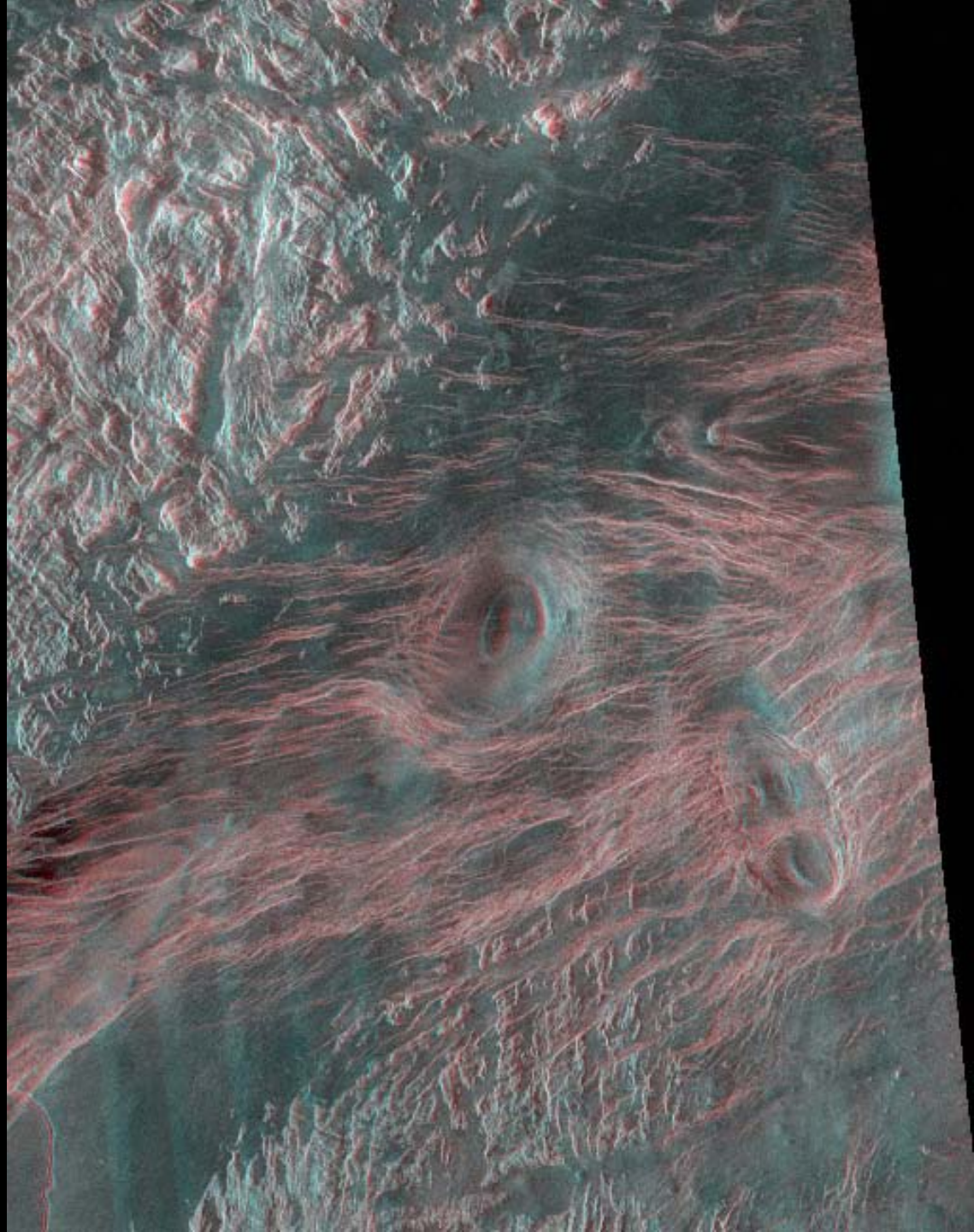
http://www.lpi.usra.edu/publications/slidesets/3dsolarsystem/geologic_tour.shtml

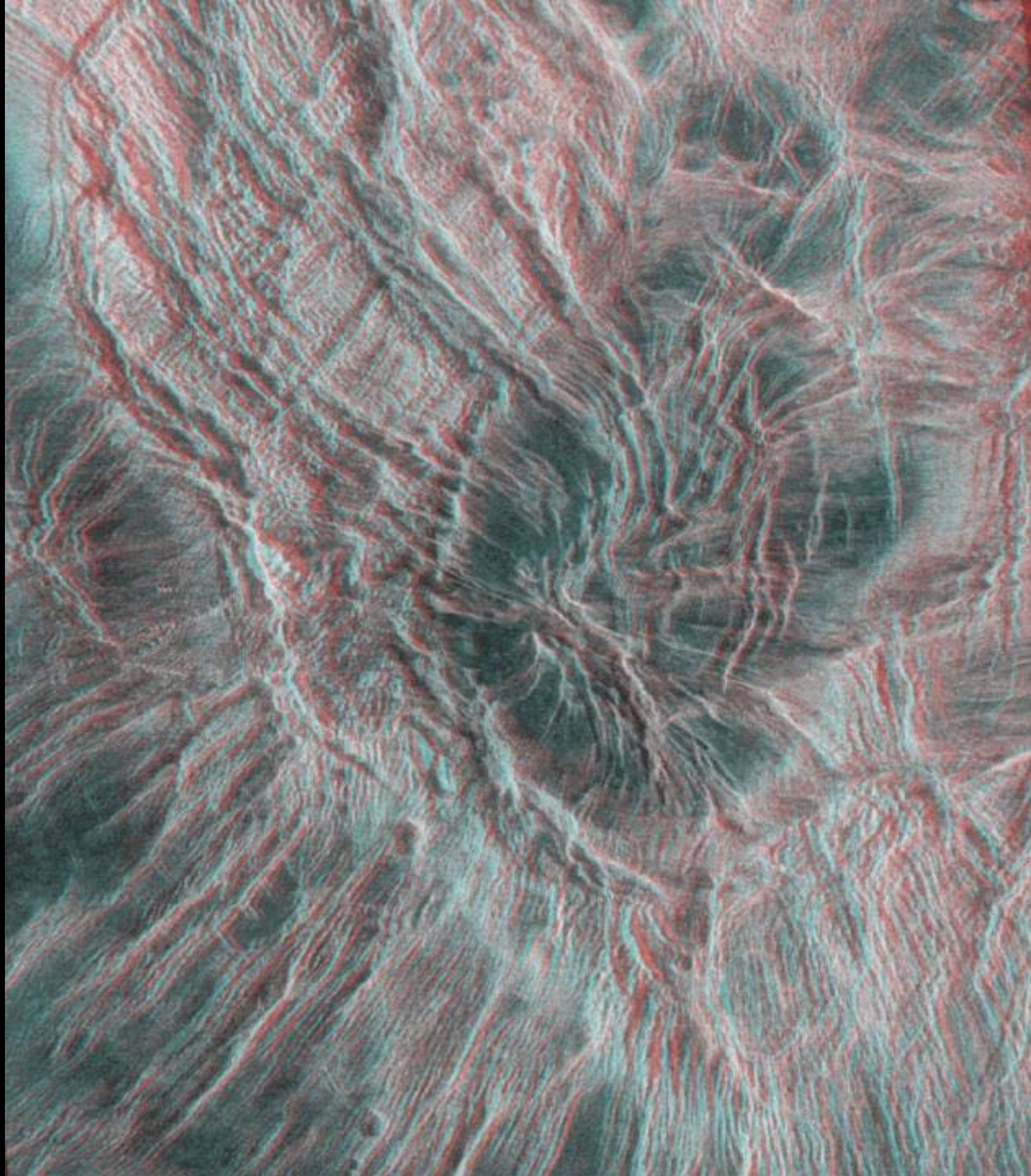


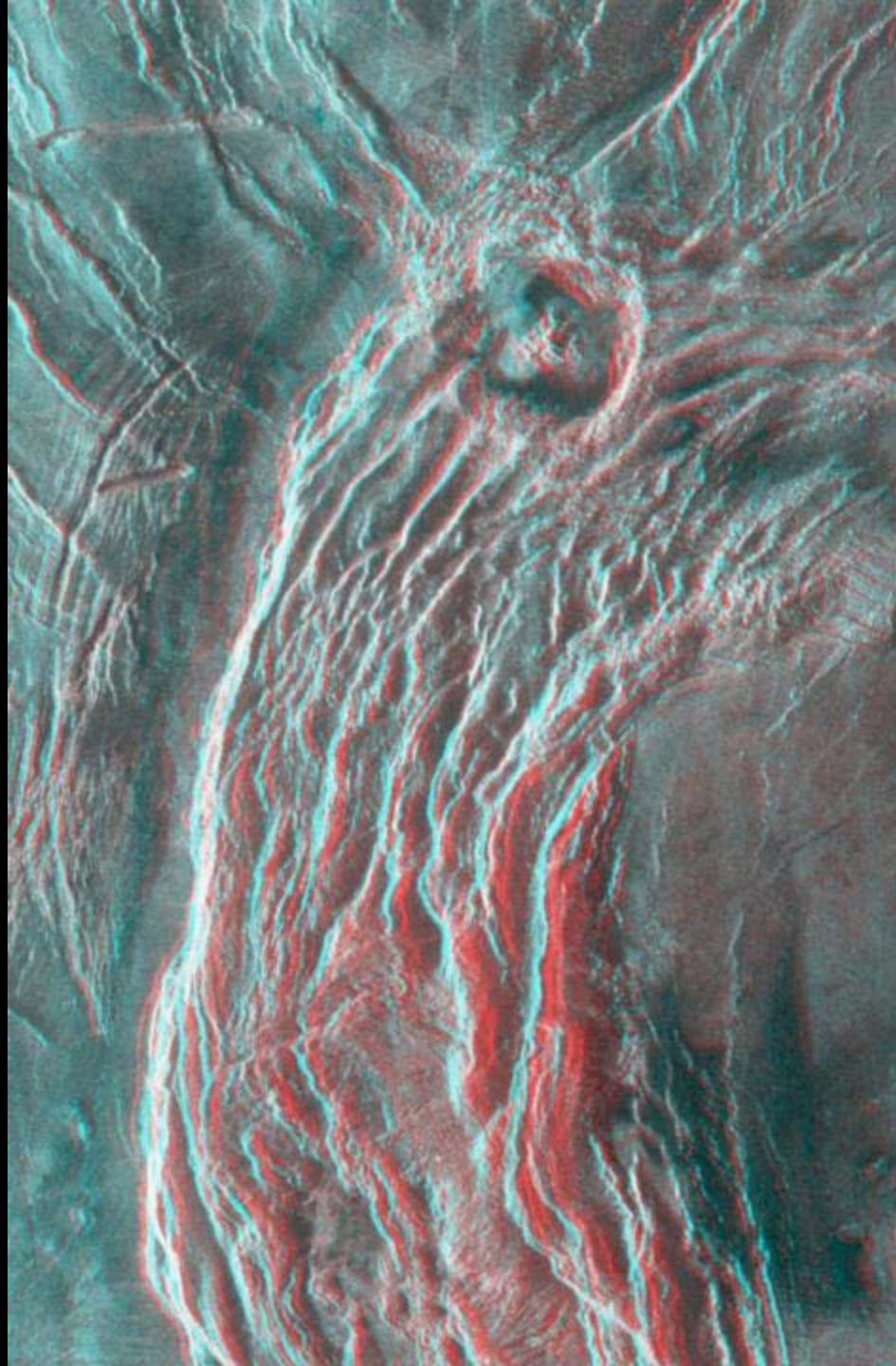


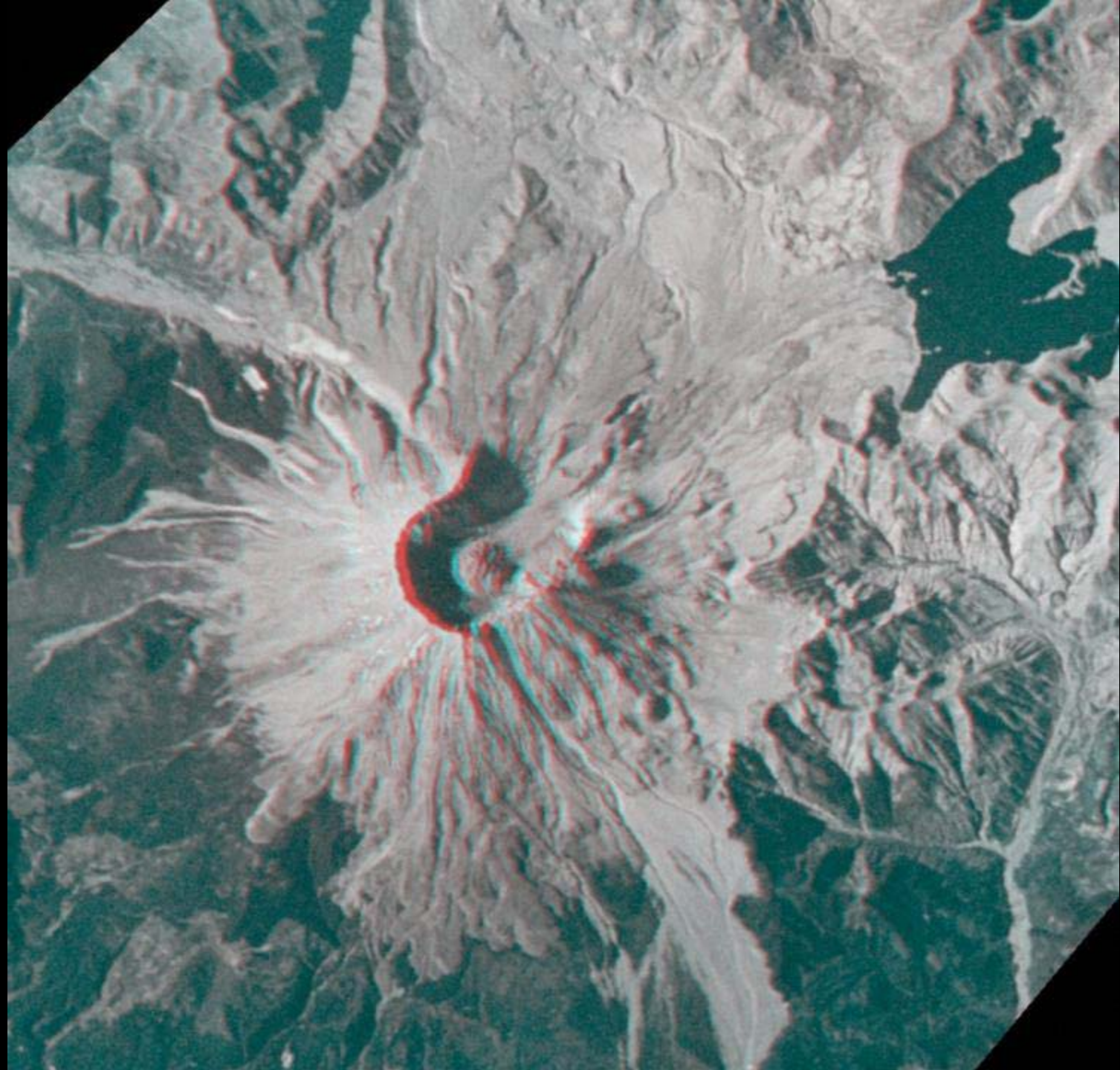


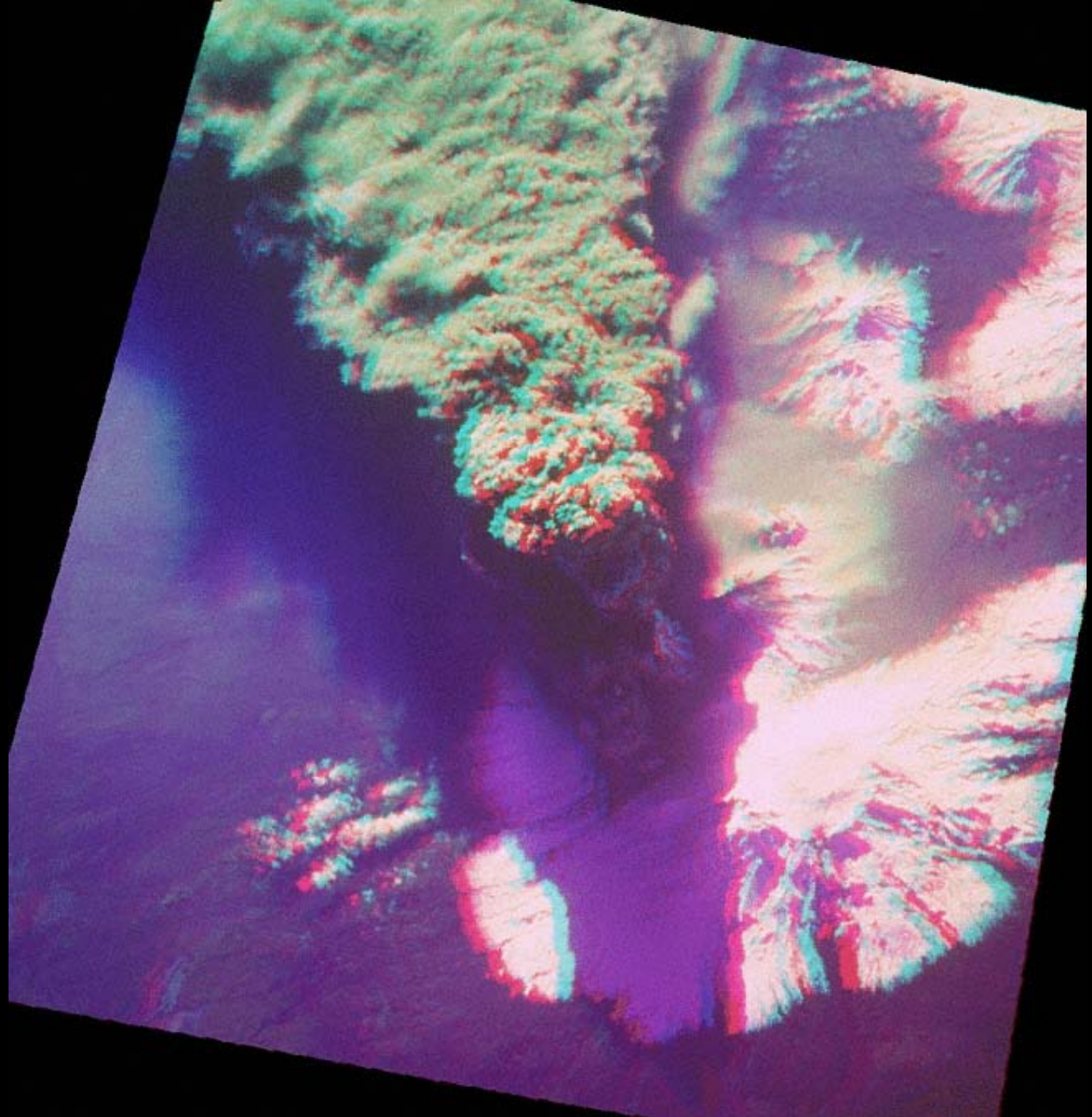


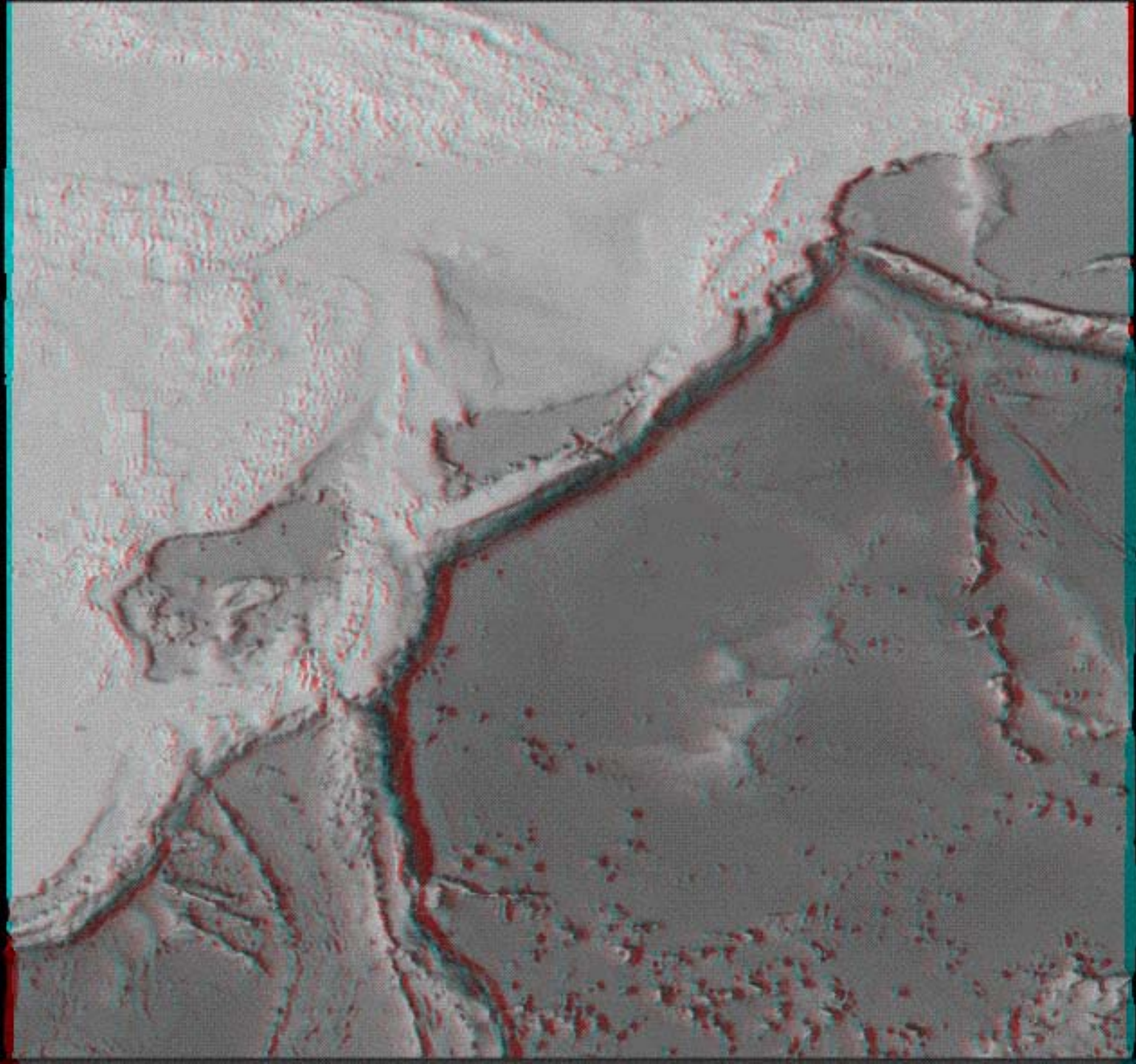


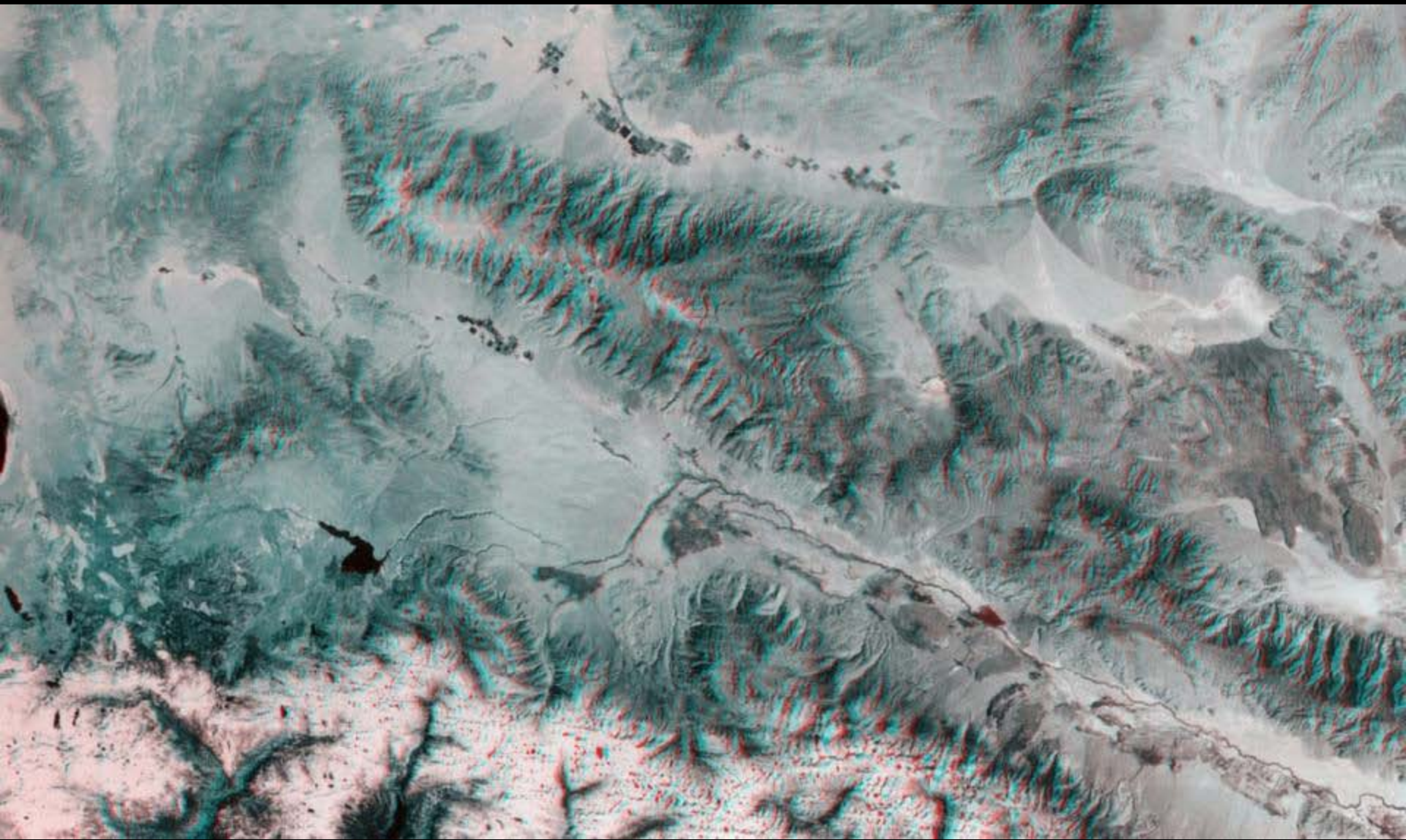


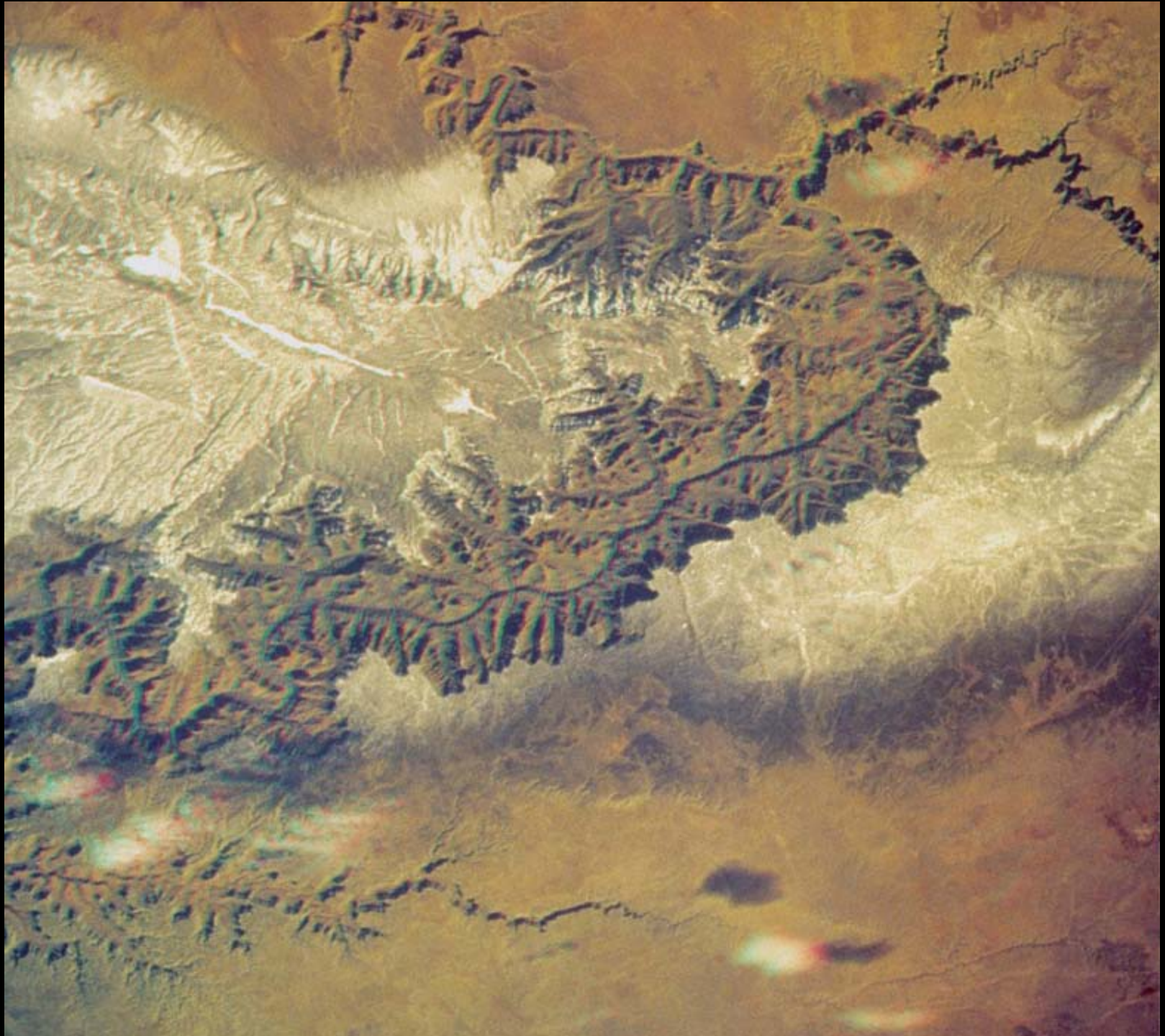


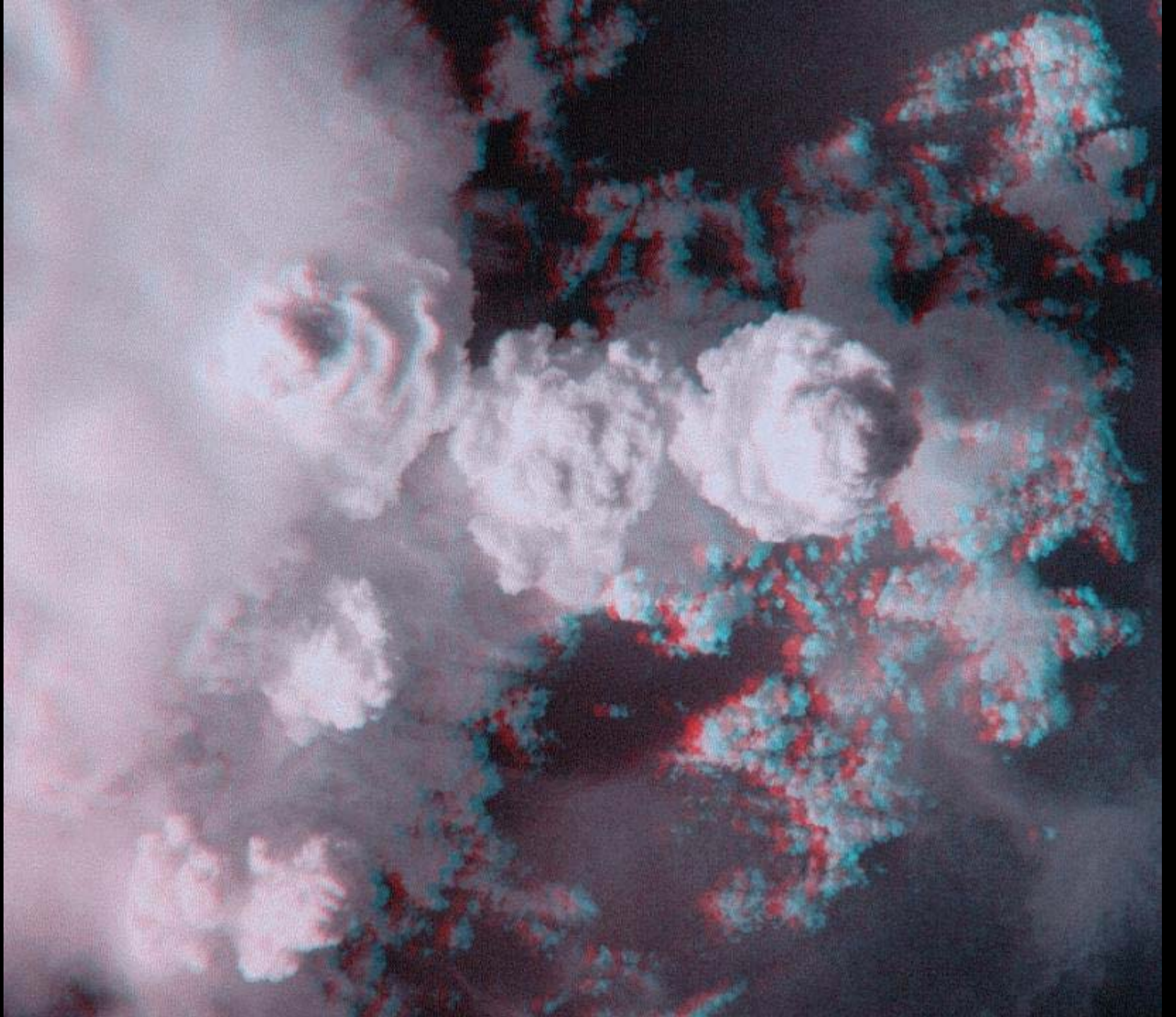


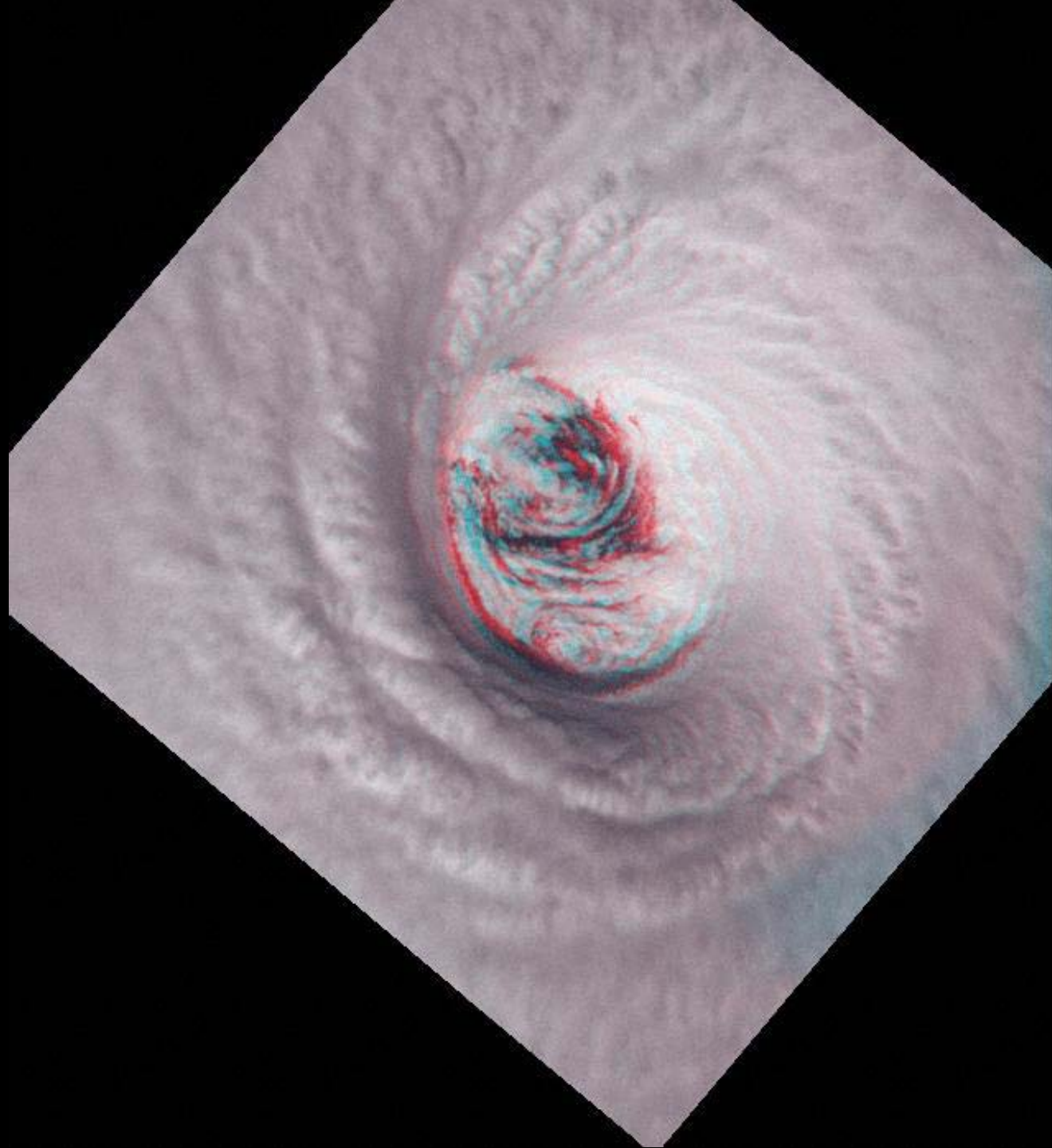


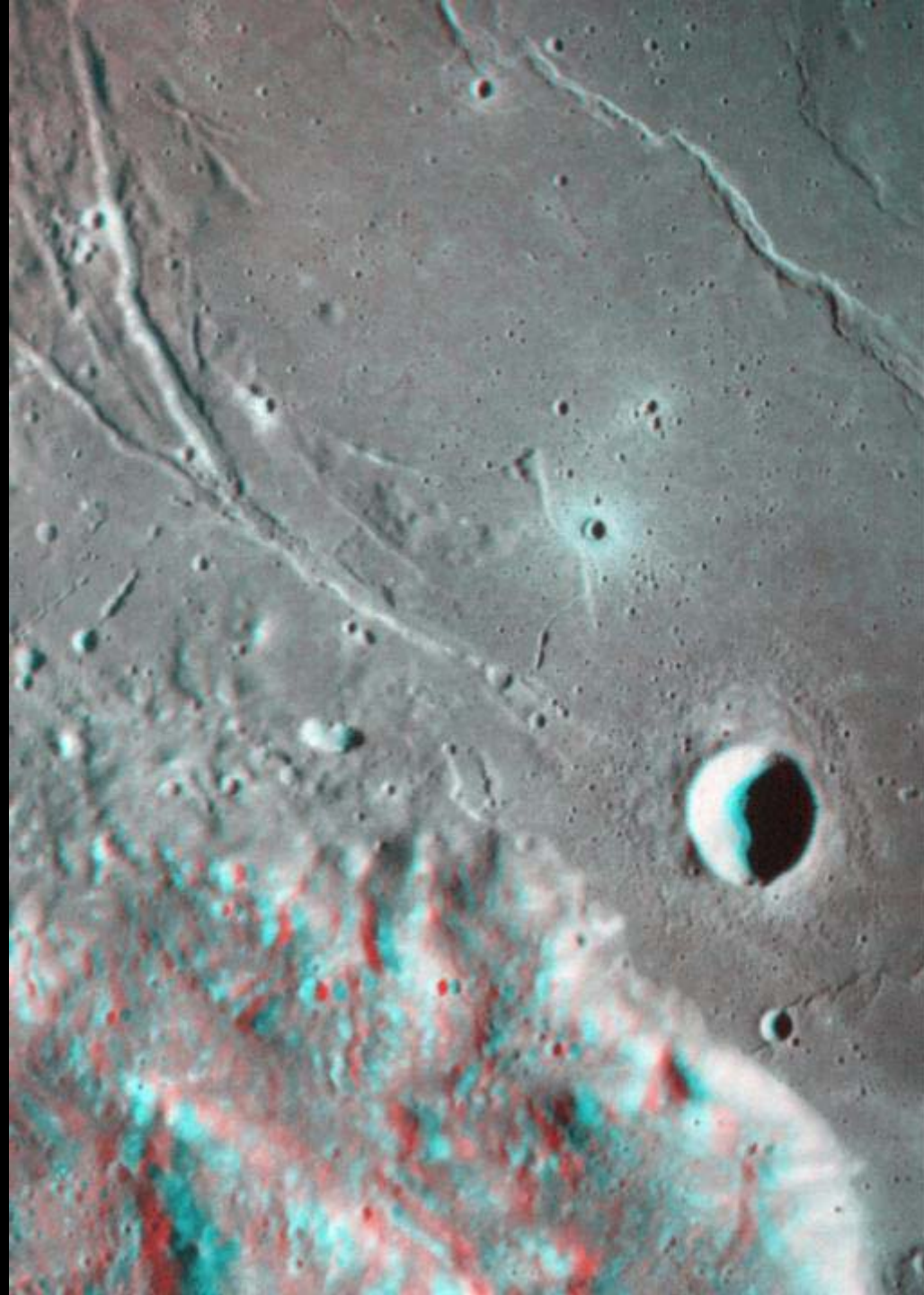


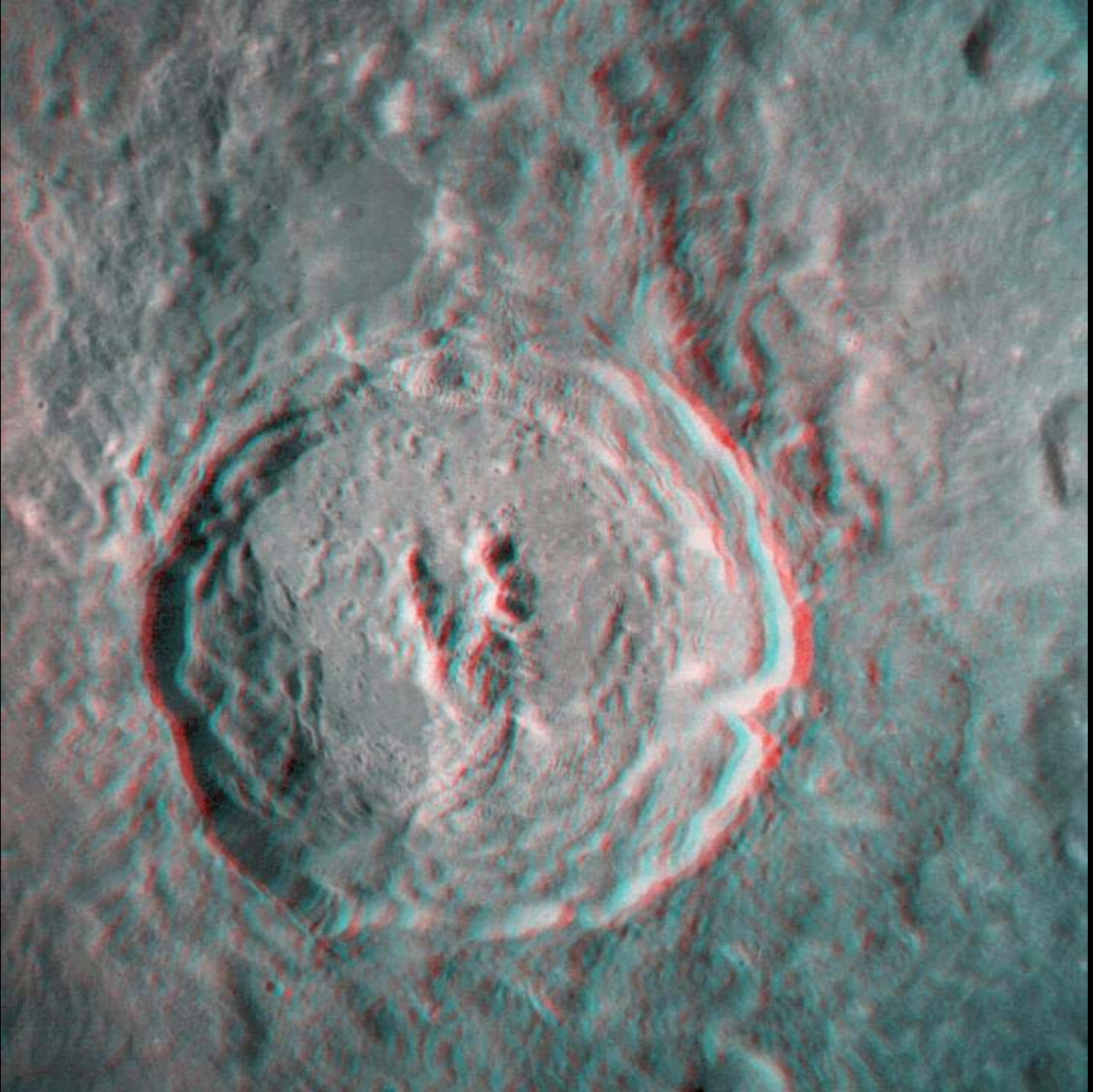




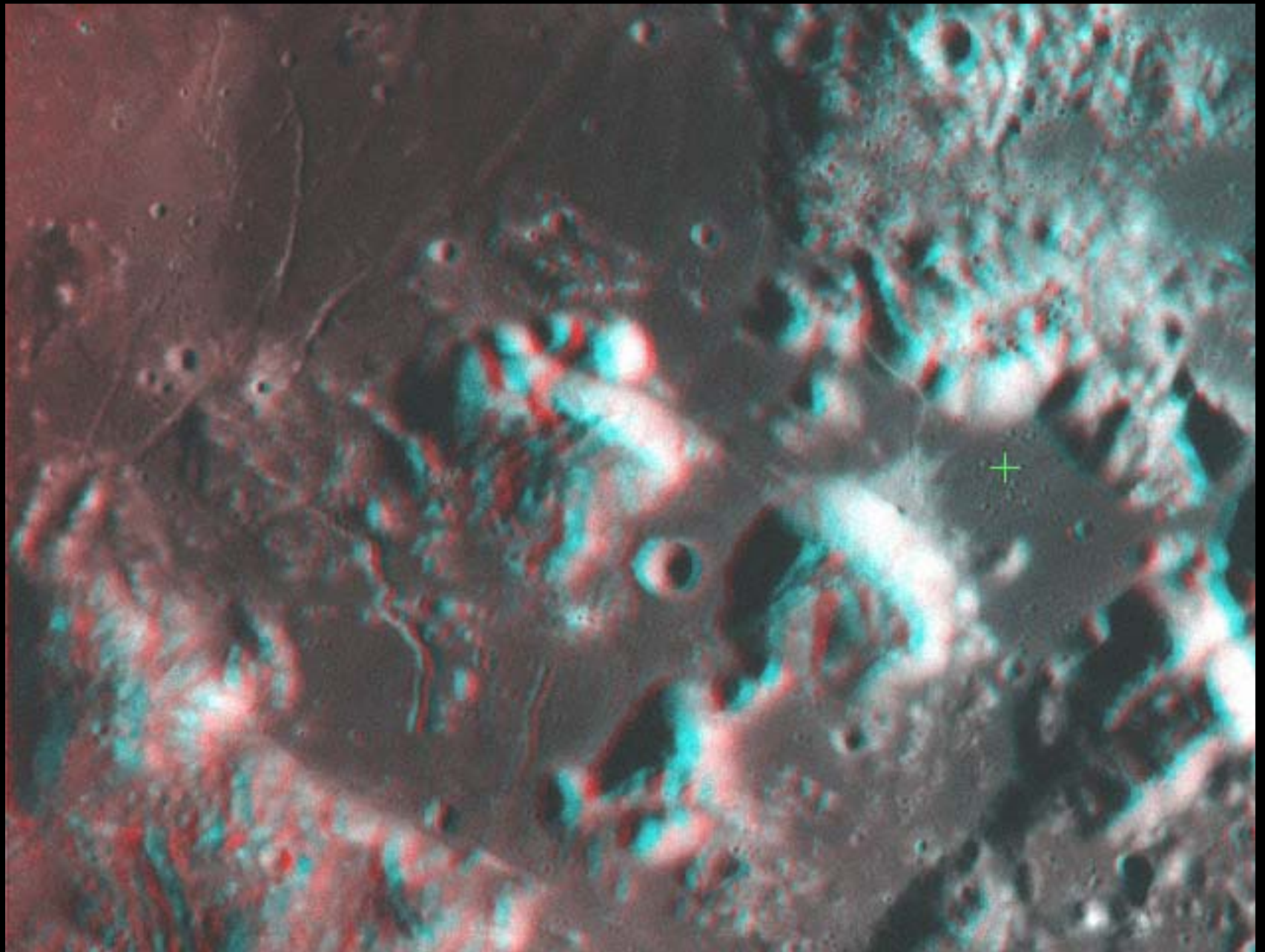


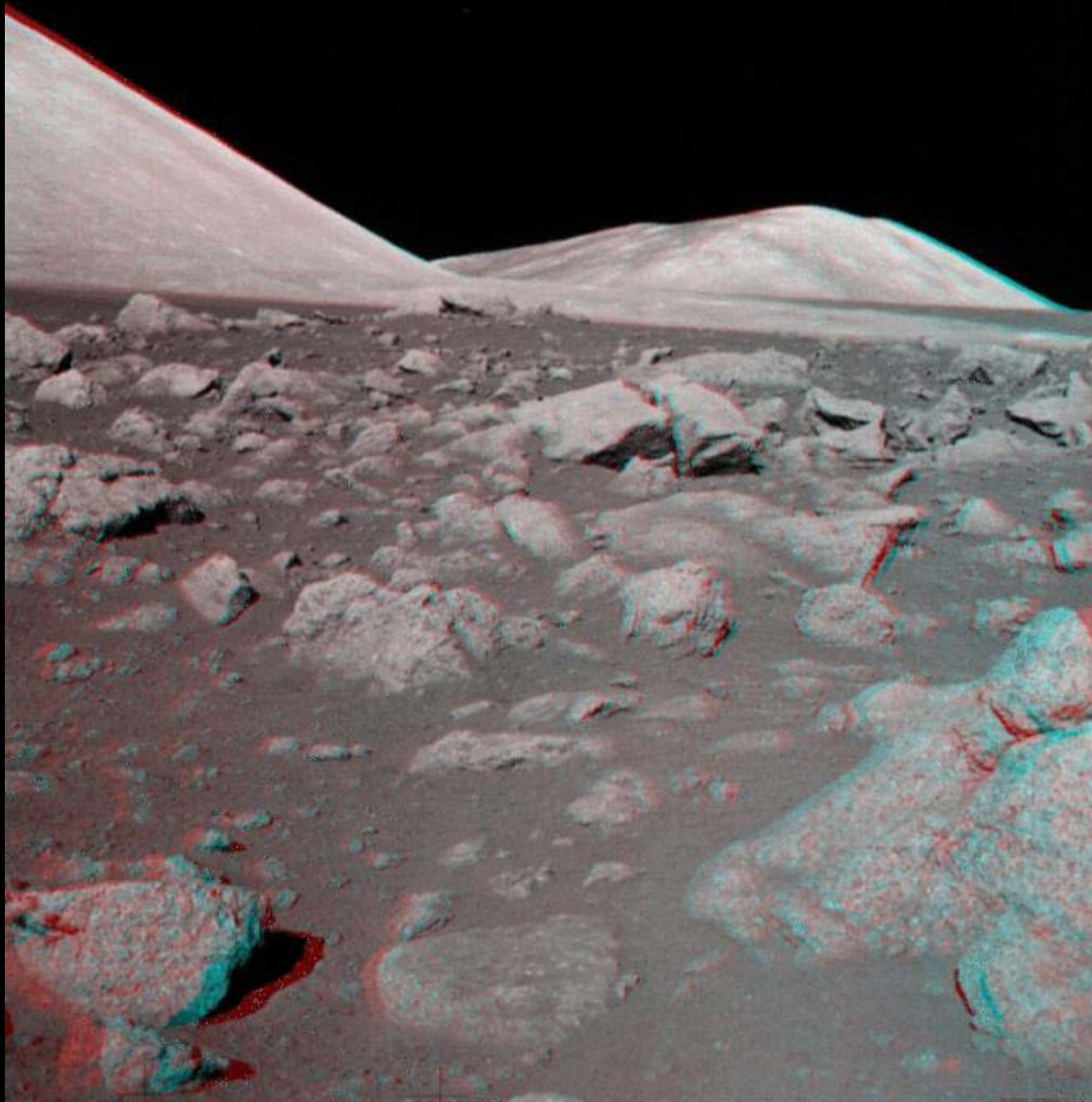


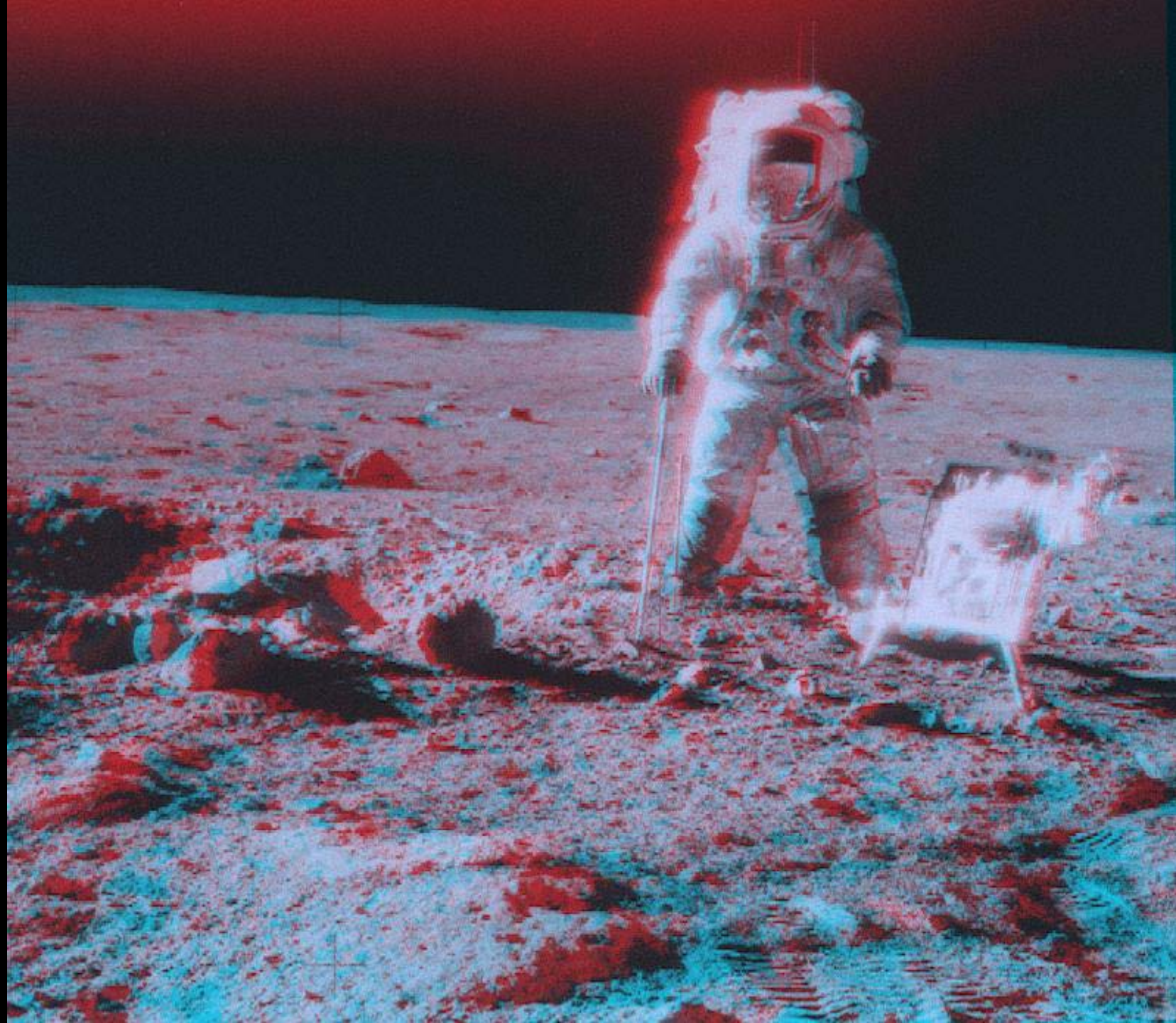


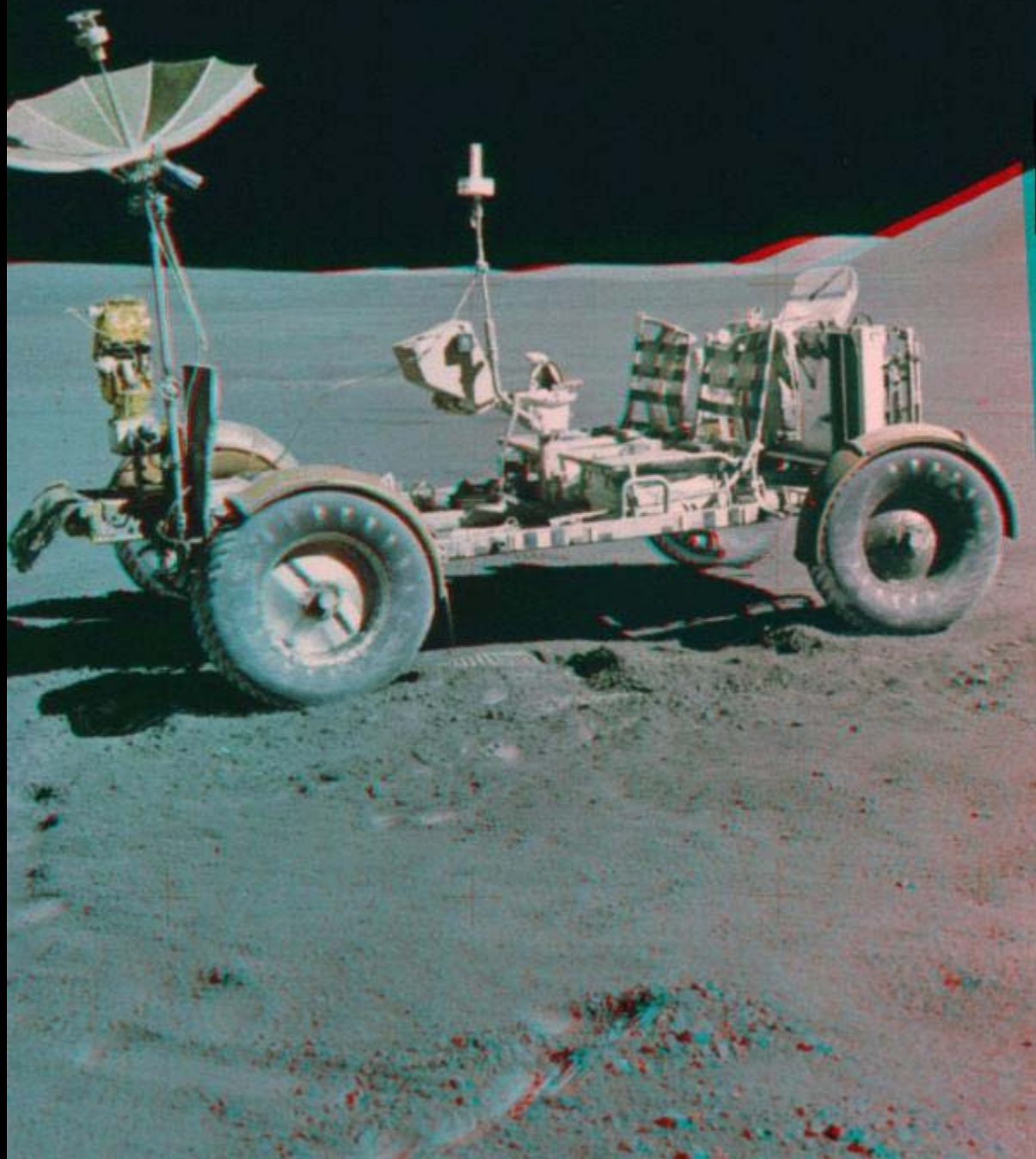


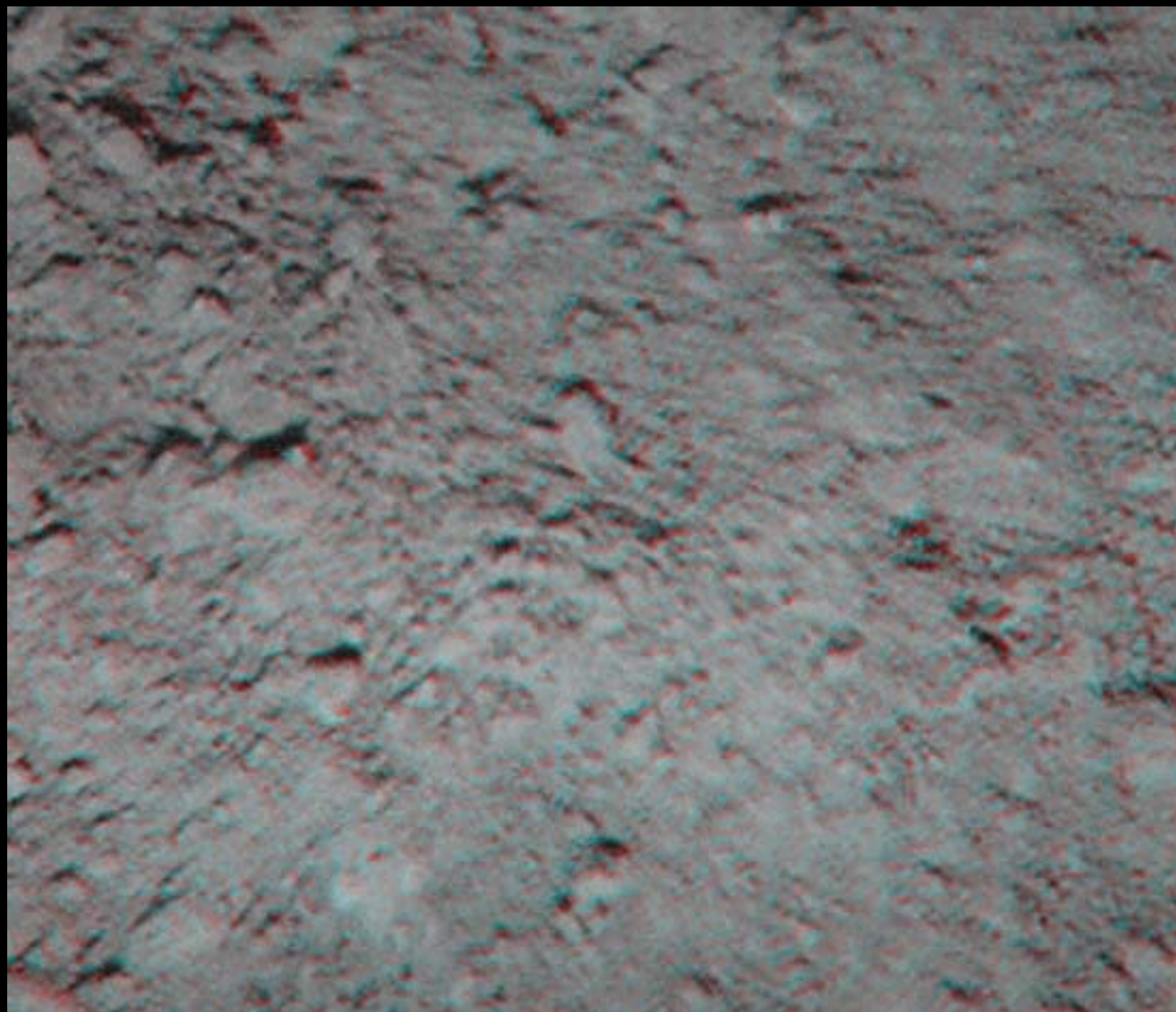


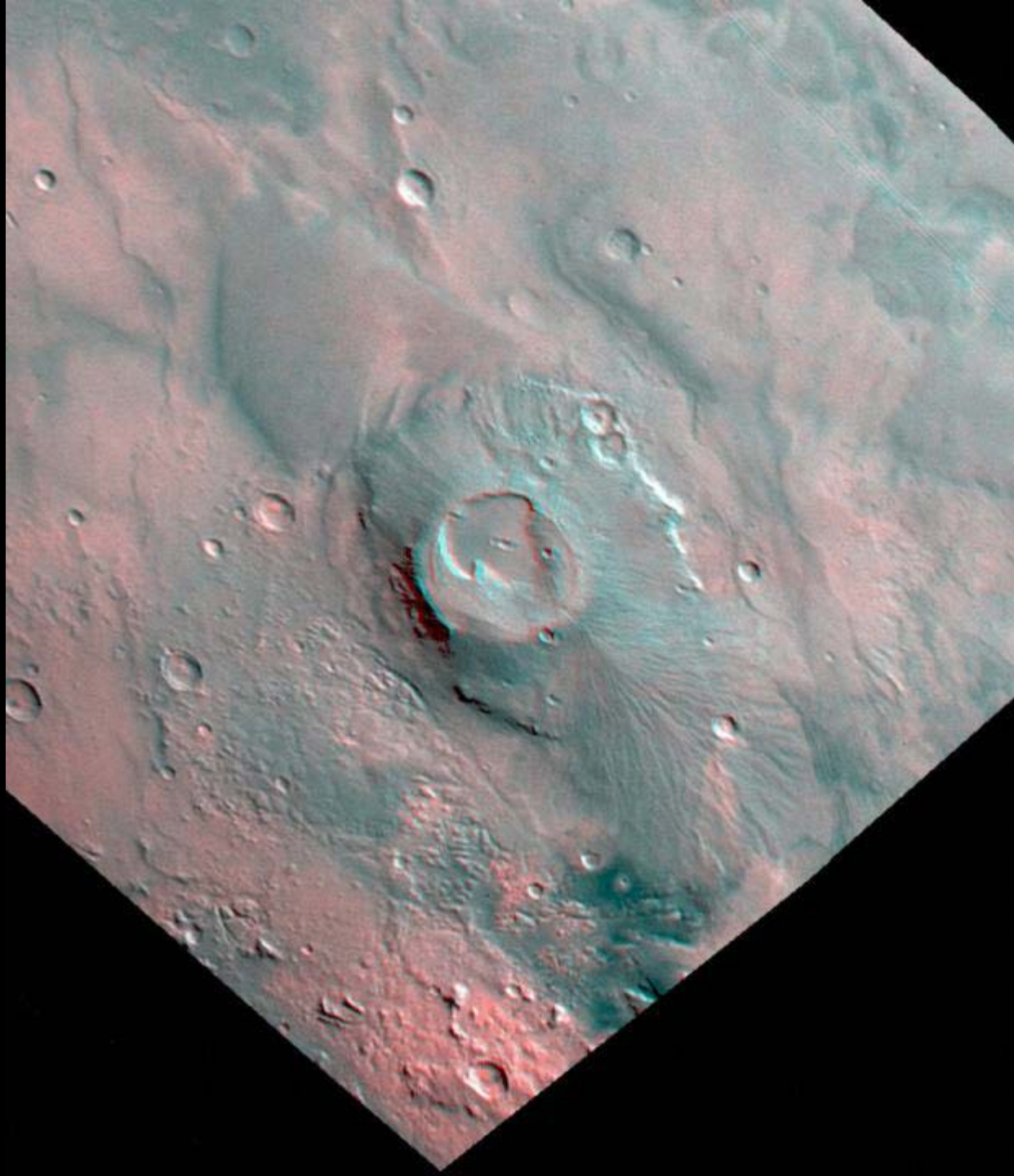


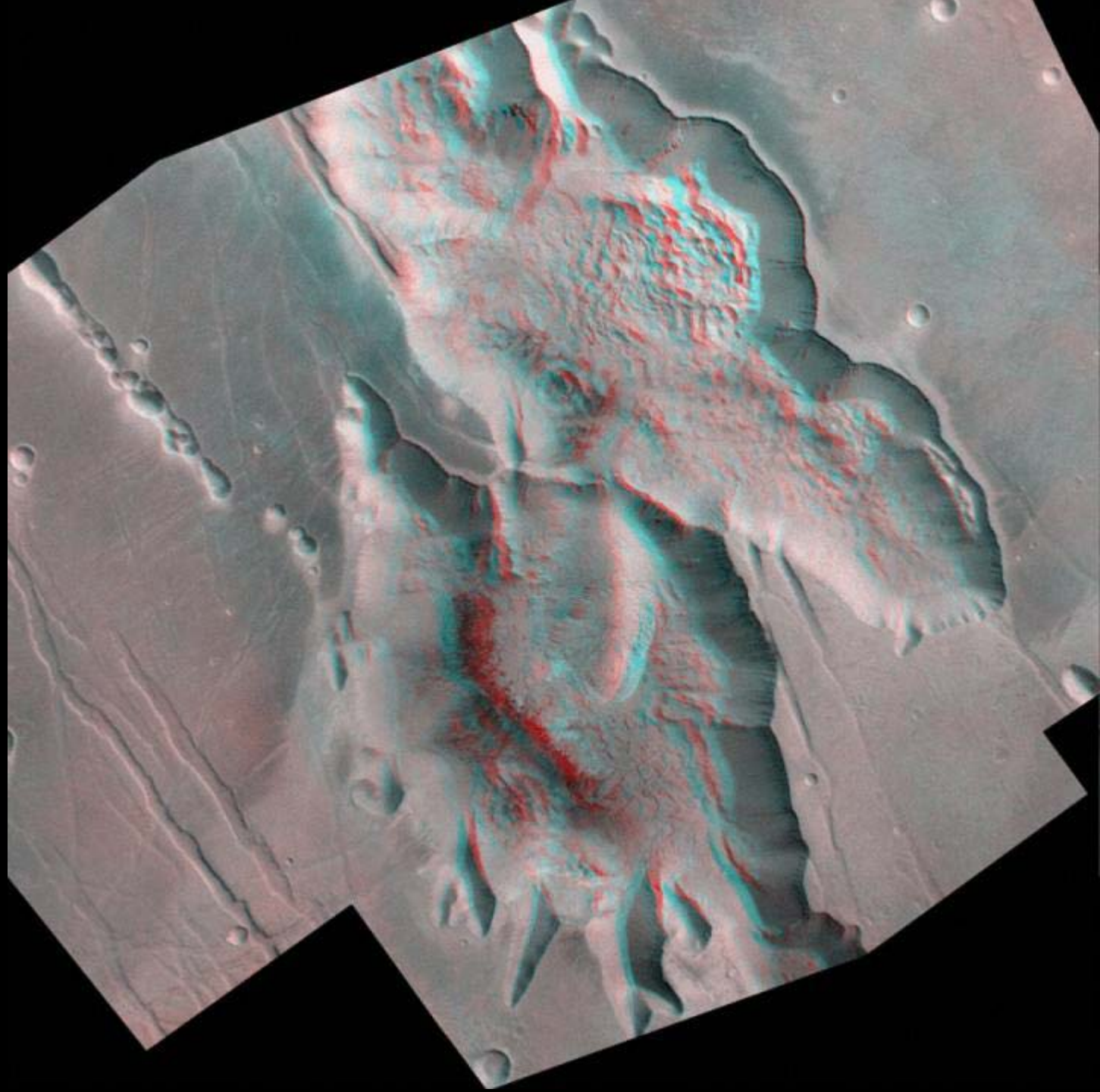


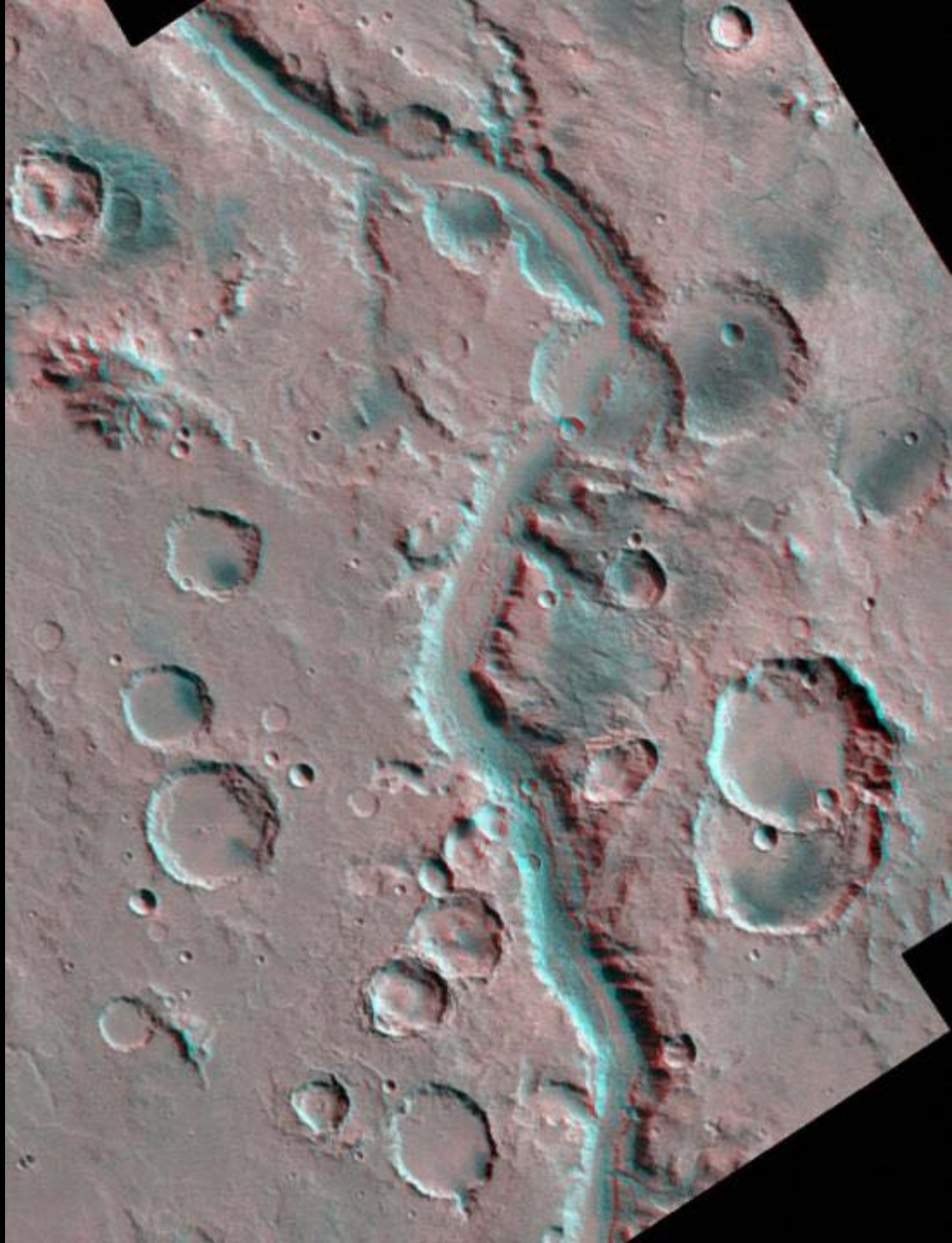




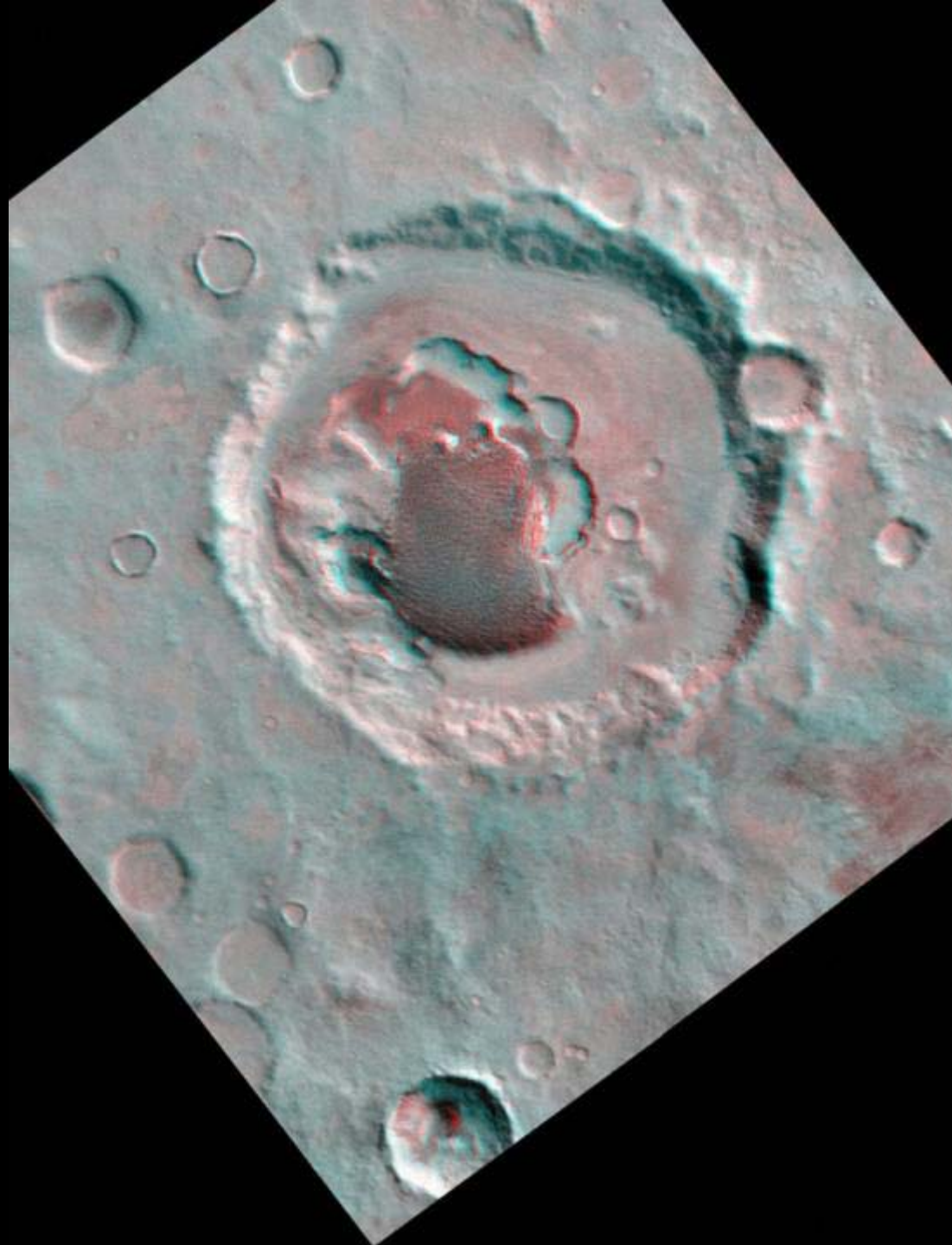


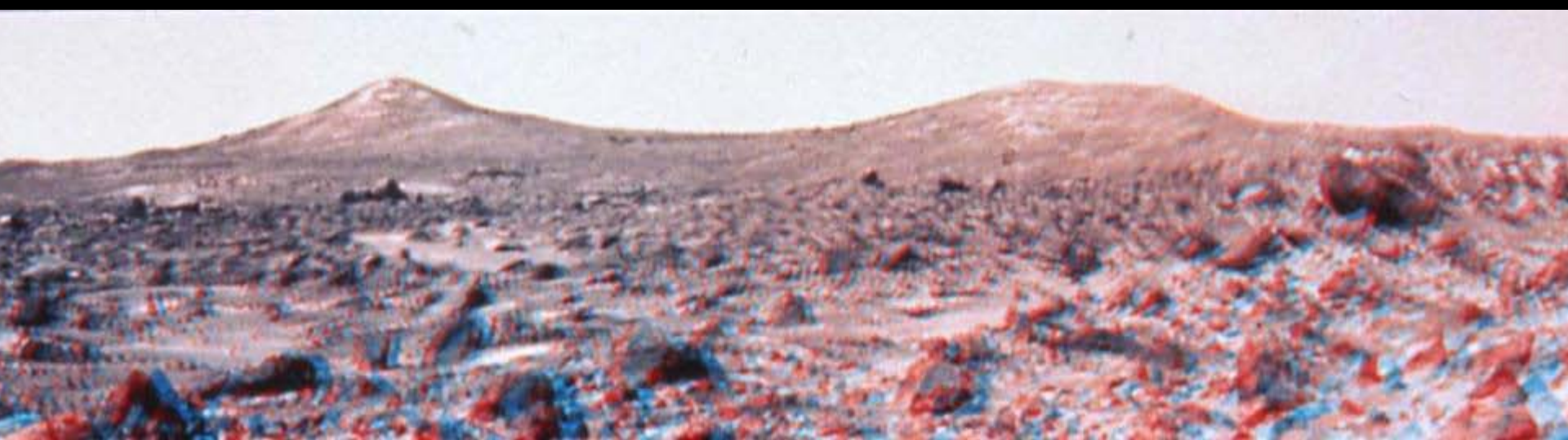


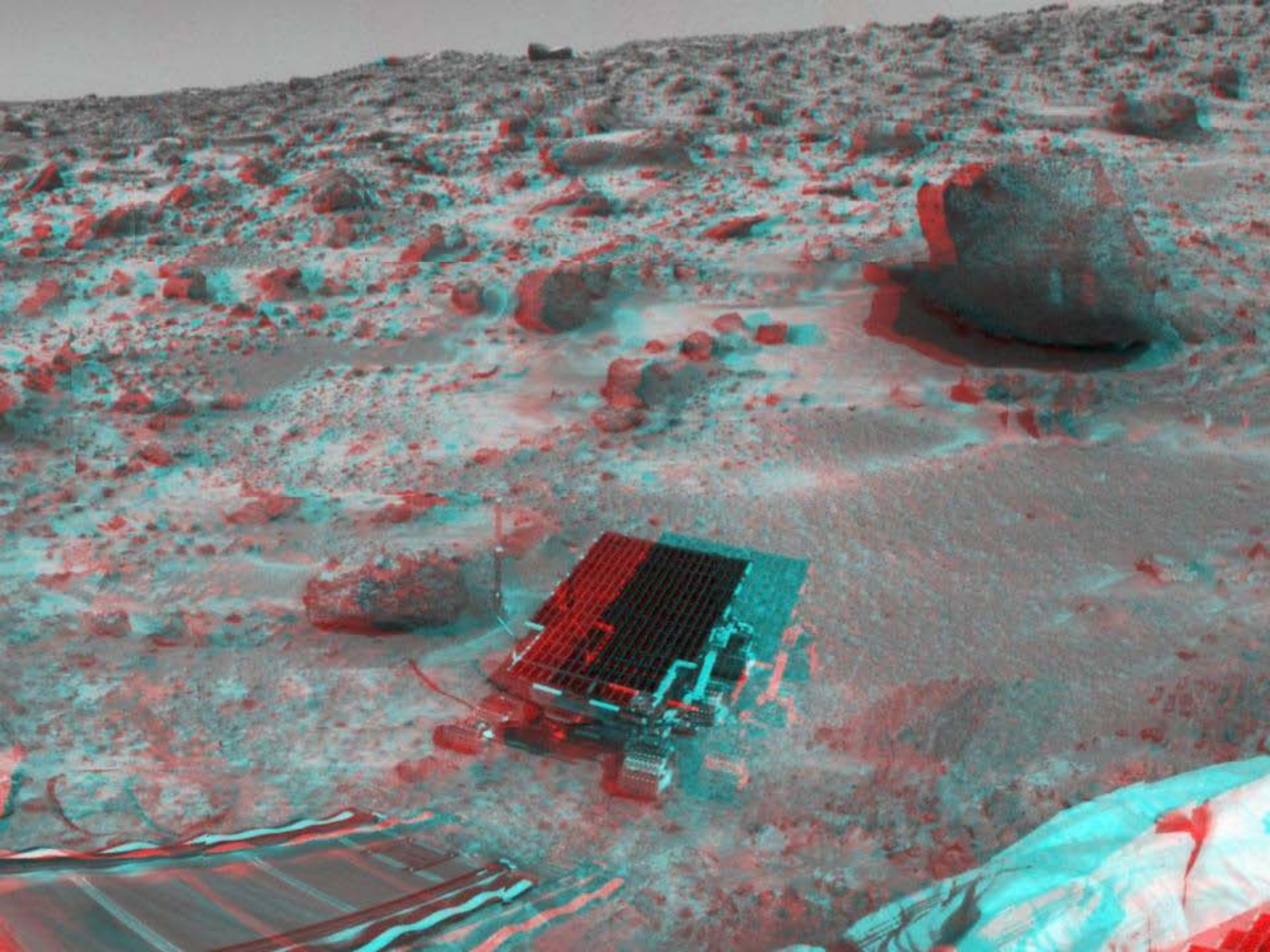


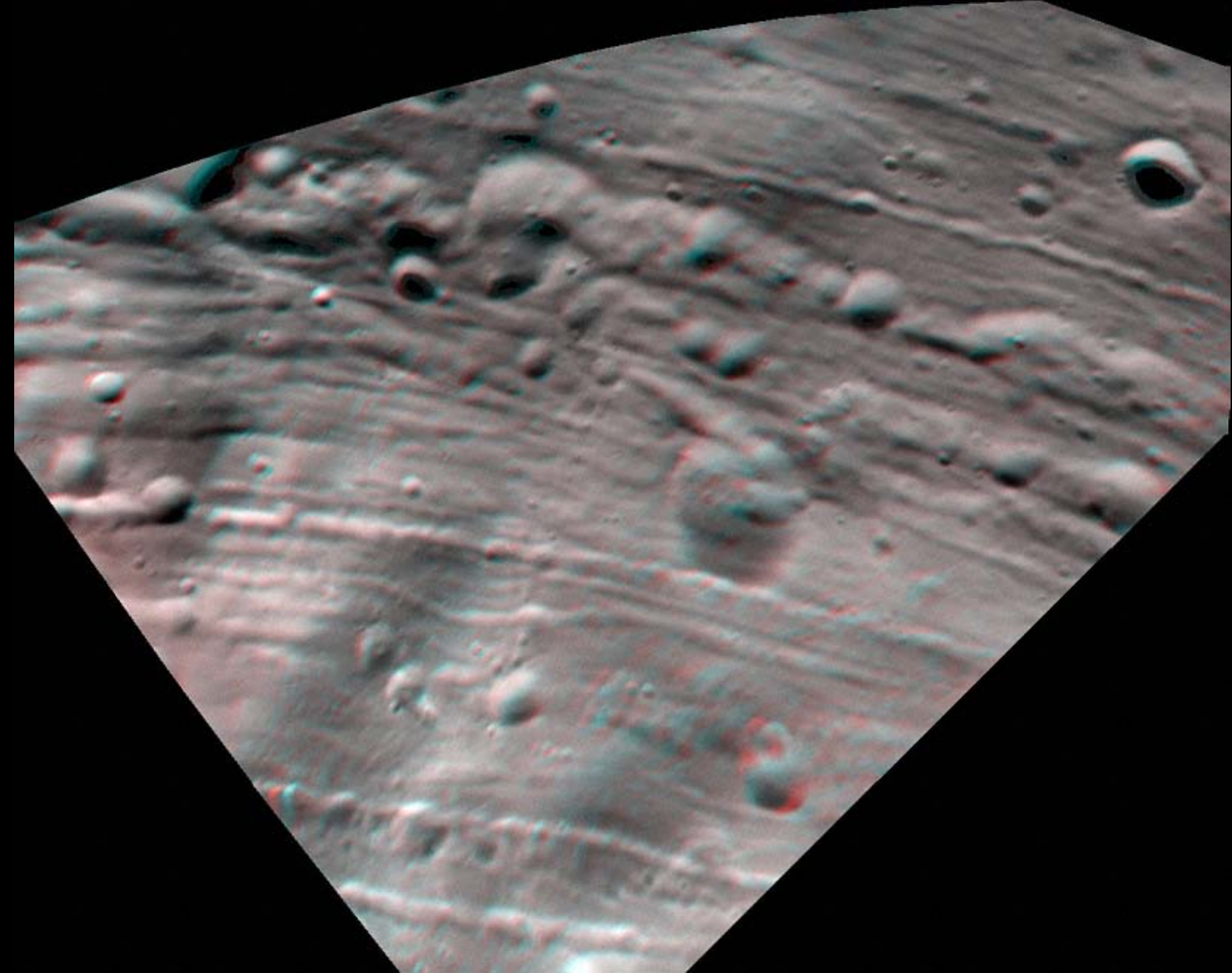




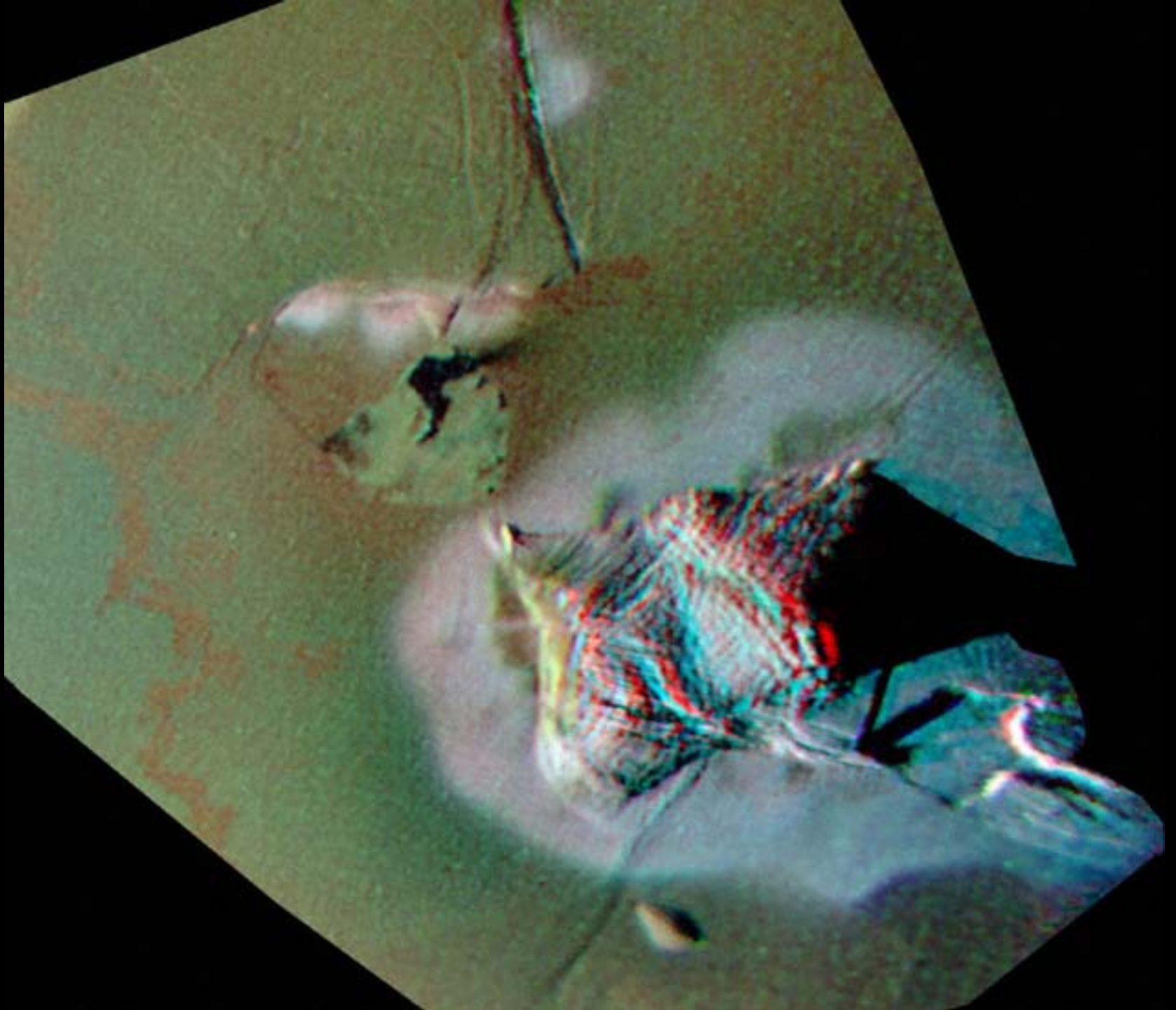


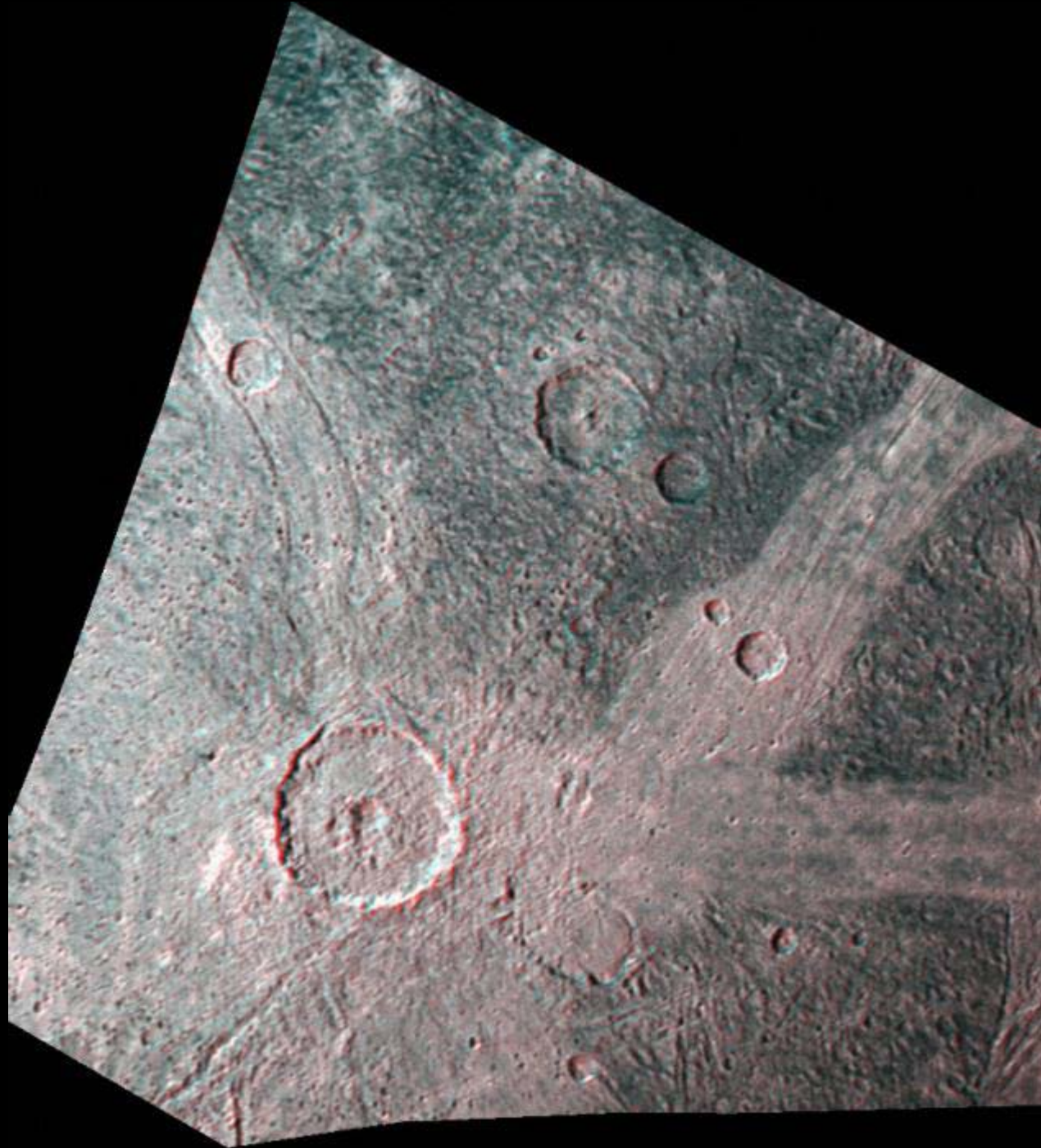


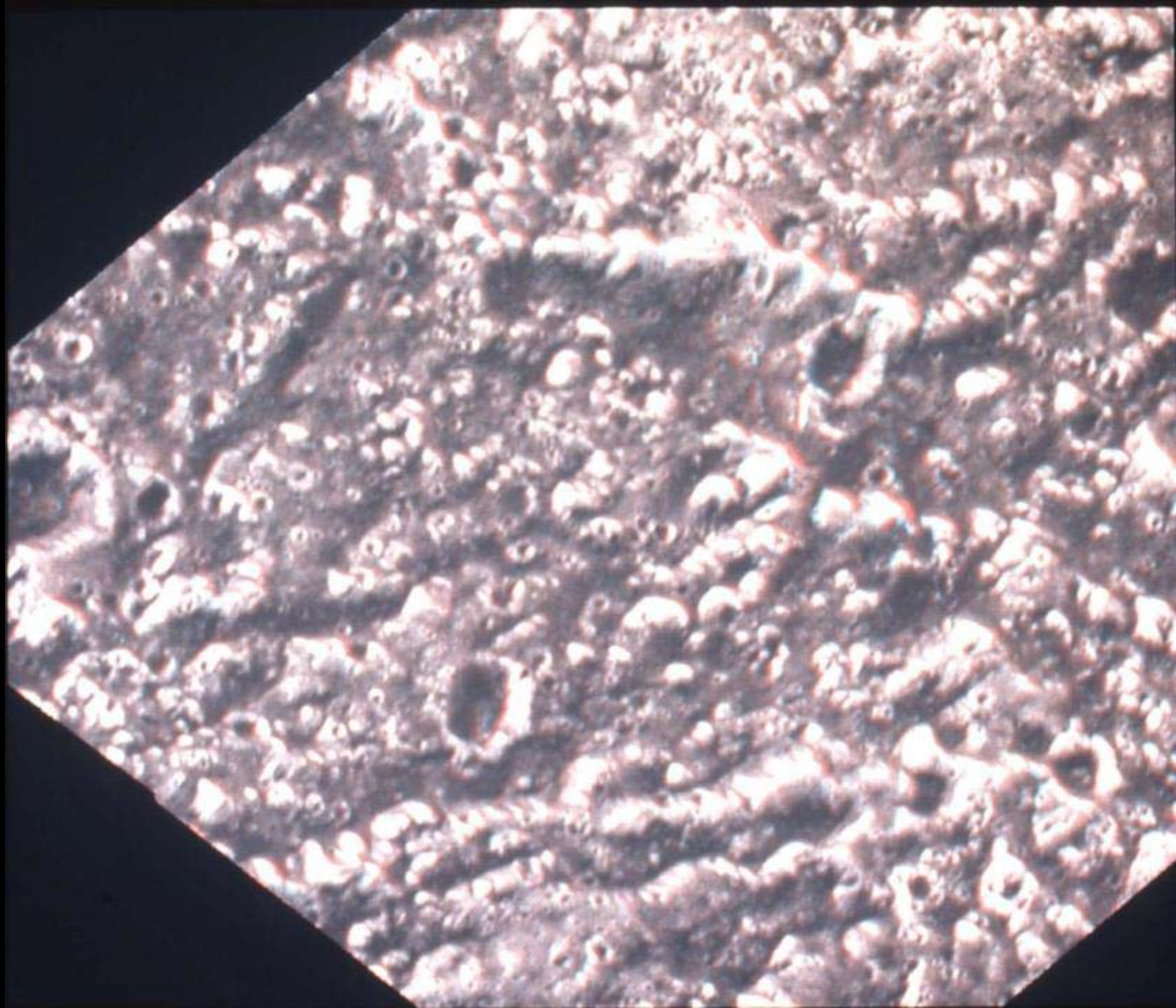


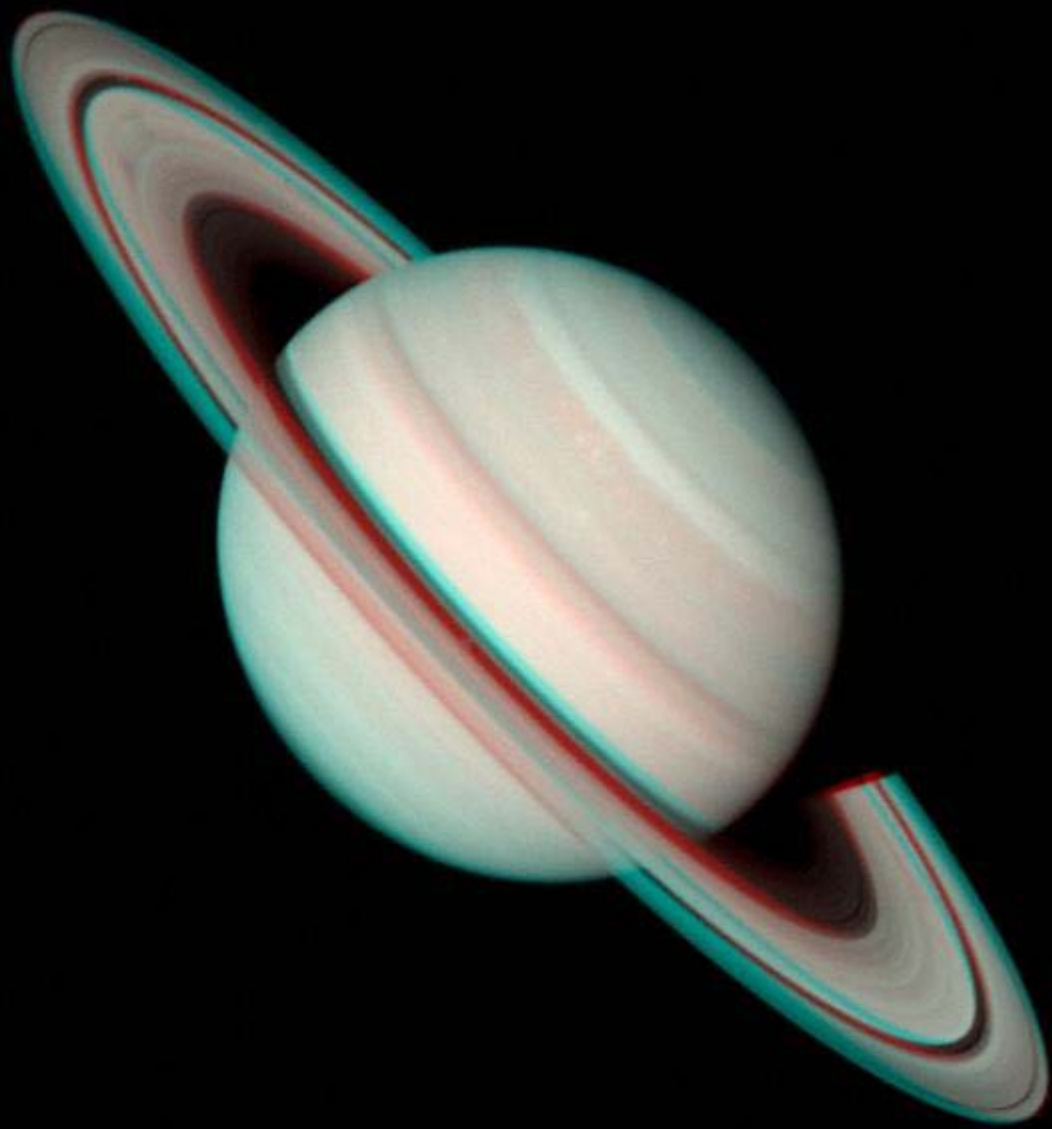


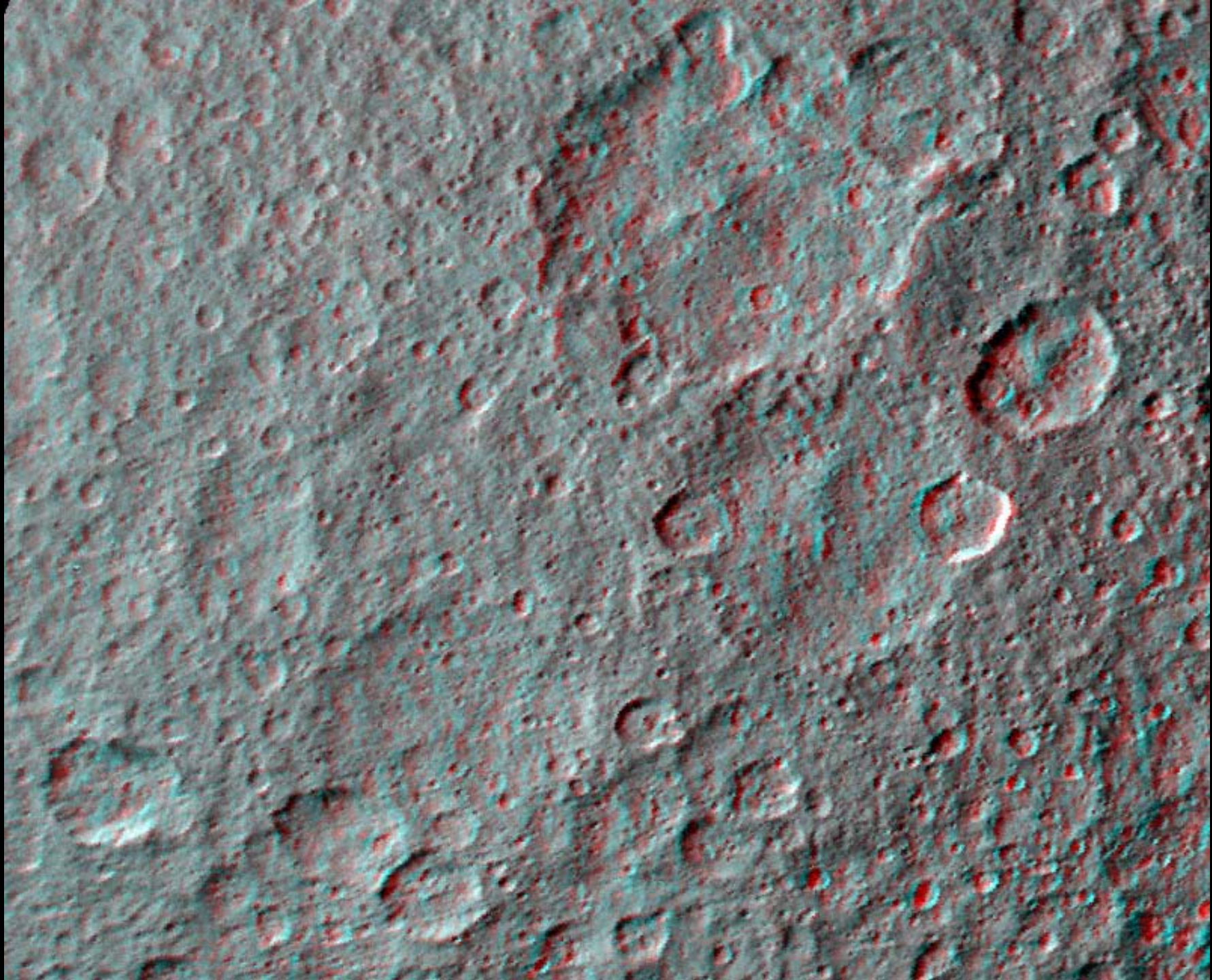


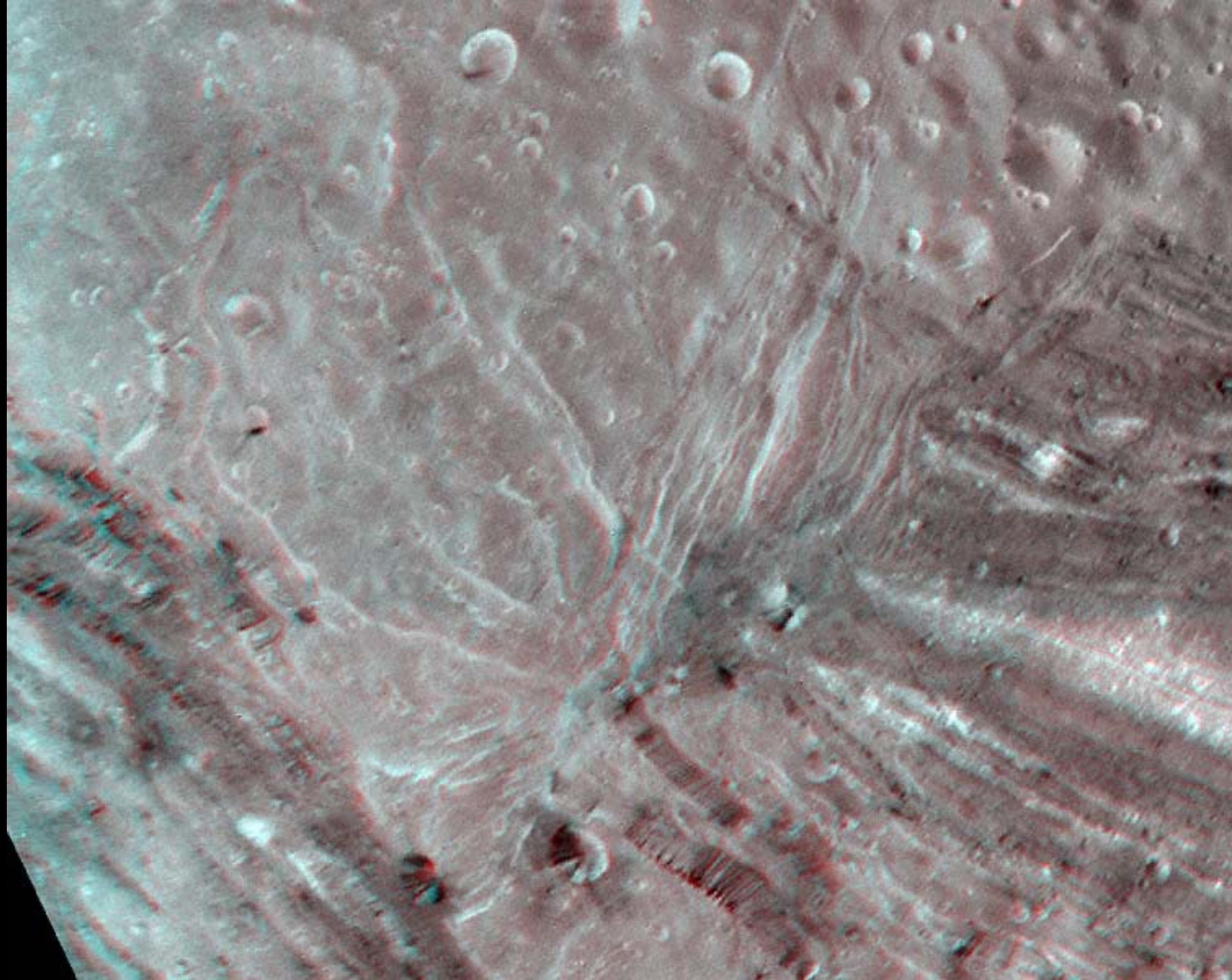


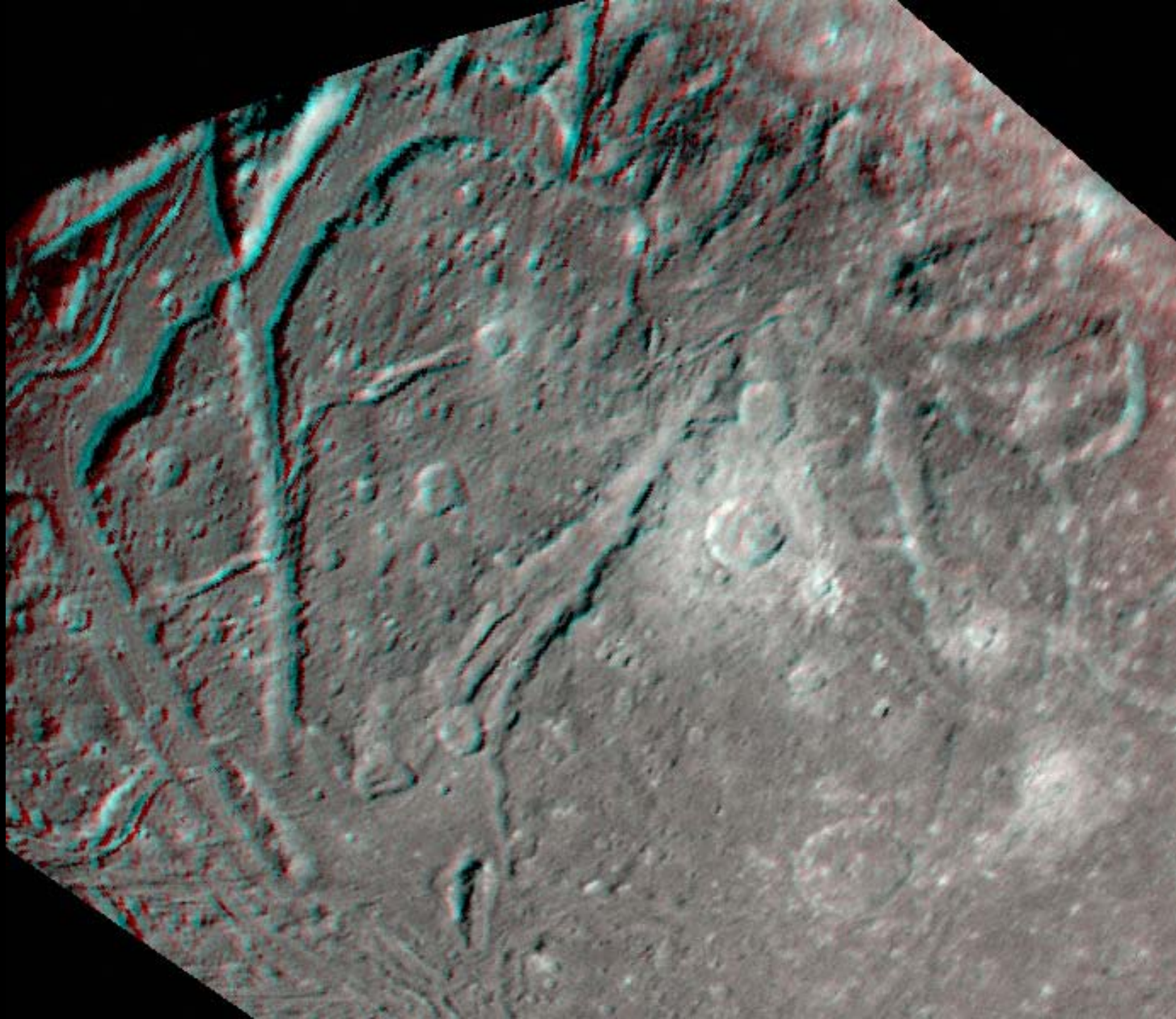


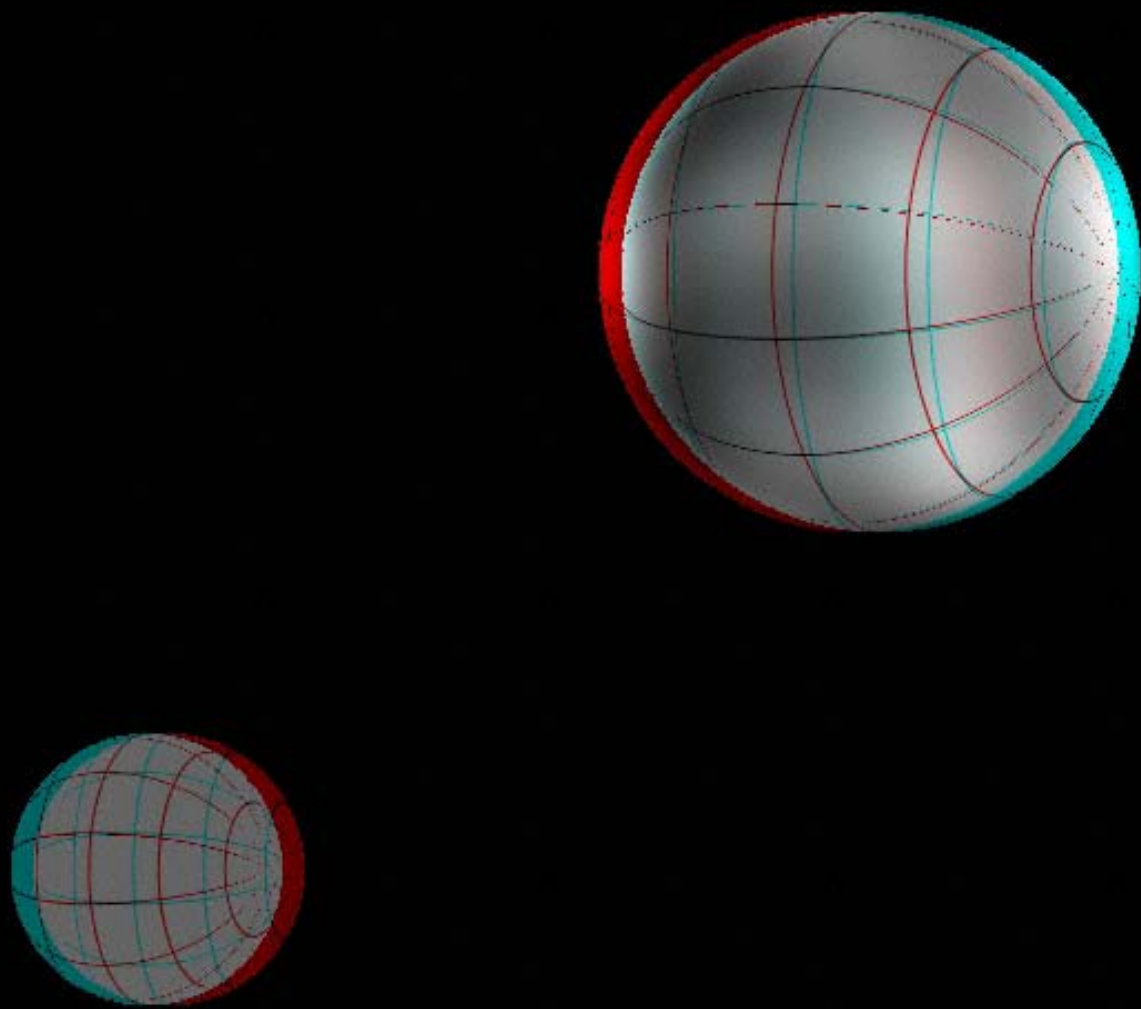
















The Lunar and Planetary Institute is operated by the Universities Space Research Association under contract number NASW-4574 with the National Aeronautics and Space Administration. This slide set is LPI Contribution No. 942

NOTE: The stereo images are presented in red-blue analgraph form. For viewing the images you will need a pair of red-blue 3-D glasses. Use the red lens on the left eye.